

Part Number Notation

SC 20 UU N - A N S



- Aluminum Case Unit
- Nominal Shaft Diameter
- Seal

Blank	No Seal
UU	Both Side Seal
U	One Side Seal

- New type
- Retainer (material)

Blank	Resin Retainer(Standard)
A	Steel Retainer(High temperature) <sup>★1</sup>

- Outer-sleeves (by corrosion resistance)

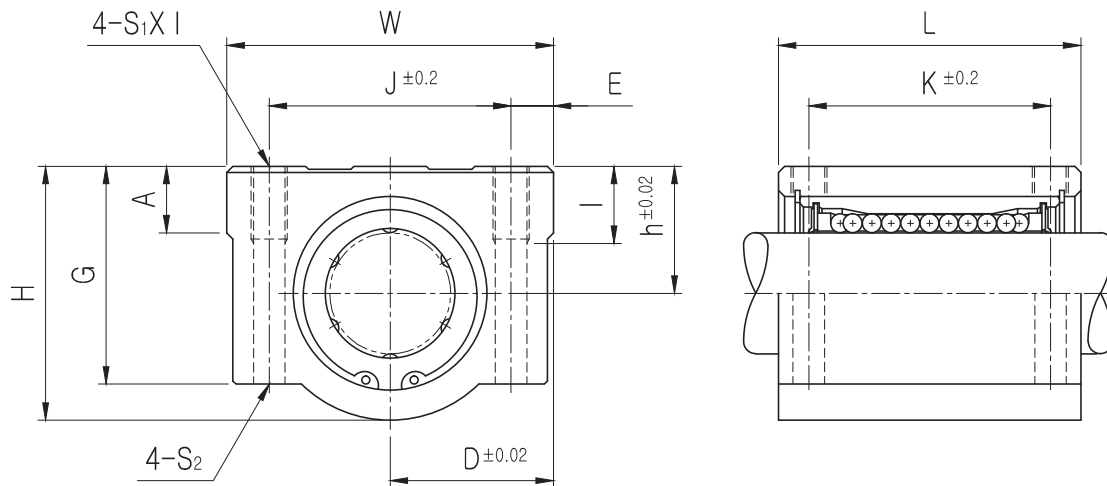
Blank	Standard(SUJ2)
N	Electroless nickel plating
R	Raydent treatment

- Ball type (material)

Blank	High carbon bearing steel ball(Standard)
S	Stainless steel ball

★1 Steel retainer applicable from SC8 to SC25 only

# SC ALUMINUM CASE UNIT



PART NUMBER	L/B	h	D	W	H	G	A	J	E	S <sub>1</sub> ×l	S <sub>2</sub>	K	L	BASIC LOAD RATING(N) <sup>*4</sup>		WEIGHT (gf) <sup>*2</sup>
														DYNAMIC (C) <sup>*1</sup>	STATIC (C <sub>0</sub> )	
SC8UU-B	LM8UU	11	17	34	22	18	6	24	5	M4×8	Φ3.4	18	30	260	400	56
SC10UU-B	LM10UU	13	20	40	26	21	8	28	6	M5×12	Φ4.3	21	35	370	540	90
SC12UU-B	LM12UU	15	22	44	30	24.5	8	33	5.5	M5×12	Φ4.3	26	39	410	590	112
SC12UUN-B	LM12UU	15	21	42	28	24	7.4	30.5	5.75	M5×12	Φ4.3	26	36	410	590	112
SC13UU-B	LM13UU	15	22	44	30	24.5	8	33	5.5	M5×12	Φ4.3	26	39	500	770	123
SC16UU-B	LM16UU	19	25	50	38.5	32.5	9	36	7	M5×12	Φ4.3	34	44	770	1170	189
SC20UU-B	LM20UU	21	27	54	41	35	11	40	7	M6×12	Φ5.2	40	50	860	1370	237
SC25UU-B	LM25UU	26	38	76	51.5	41	12	54	11	M8×18	Φ6.8	50	67	980	1560	555
SC30UU-B	LM30UU	30	39	78	59.5	49	15	58	10	M8×18	Φ6.8	58	72	1560	2740	685
SC35UU-B	LM35UU	34	45	90	68	54	18	70	10	M8×18	Φ6.8	60	80	1660	3130	1100
SC40UU-B	LM40UU	40	51	102	78	62	20	80	11	M10×25	Φ8.6	60	90	2150	4010	1600
SC50UU-B	LM50UU	52	61	122	102	80	24	100	11	M10×25	Φ8.6	80	110	3820	7930	3350

## Part Number Notation

**SC 20 W UU - A N S**



- Aluminum Case Unit
- Nominal Shaft Diameter
- Linear Bushing Long Type (for high load)
- Seal

Blank	No Seal
UU	Both Side Seal
U	One Side Seal

- Retainer (material)

Blank	Resin Retainer(Standard)
A	Steel Retainer(High temperature) <sup>★1</sup>

- Outer-sleeves (by corrosion resistance)

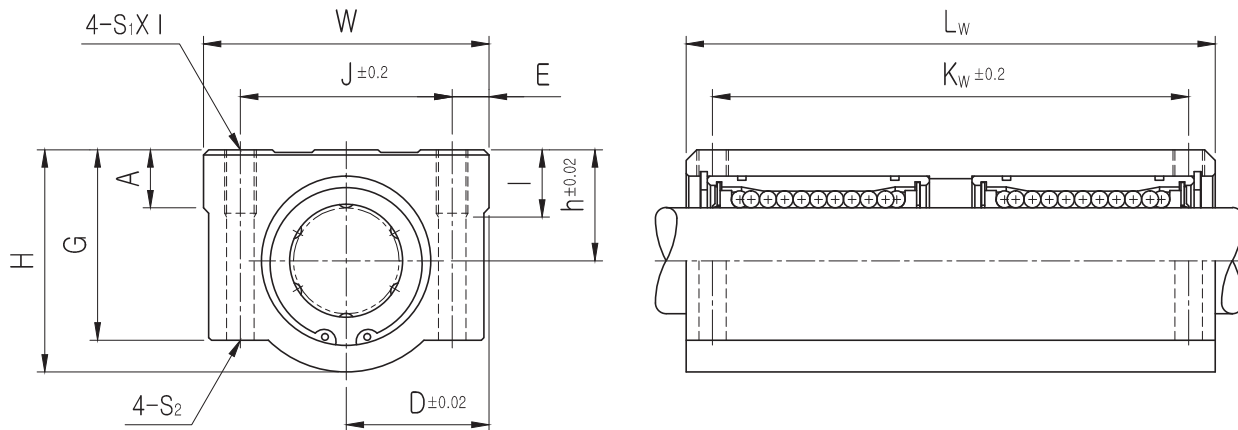
Blank	Standard(SUJ2)
N	Electroless nickel plating
R	Raydent treatment

- Ball type (material)

Blank	High carbon bearing steel ball(Standard)
S	Stainless steel ball

★1 Steel retainer applicable from SC8W to SC25W only

# SC\_W ALUMINUM CASE UNIT



PART NUMBER	LB	h	D	W	H	G	A	J	E	S <sub>1</sub> x l	S <sub>2</sub>	K <sub>w</sub>	L <sub>w</sub>	BASIC LOAD RATING(N) <sup>*4</sup>		WEIGHT (gf) <sup>*2</sup>
														DYNAMIC (C) <sup>*1</sup>	STATIC (C <sub>0</sub> )	
SC8WUU-B	LM8Ux2	11	17	34	22	18	6	24	5	M4x8	Φ3.4	42	58	410	800	94
SC10WUU-B	LM10Ux2	13	20	40	26	21	8	28	6	M5x10	Φ4.3	46	68	590	1080	147
SC12WUU-B	LM12Ux2	15	22	44	30	24.5	8	33	5.5	M5x10	Φ4.3	64	77	650	1180	220
SC13WUU-B	LM13Ux2	15	22	44	30	24.5	8	33	5.5	M5x10	Φ4.3	64	77	800	1540	245
SC16WUU-B	LM16Ux2	19	25	50	38.5	32.5	9	36	7	M5x12	Φ4.3	79	89	1230	2340	376
SC20WUU-B	LM20Ux2	21	27	54	41	35	11	40	7	M6x12	Φ5.2	90	100	1370	2740	476
SC25WUU-B	LM25Ux2	26	38	76	51.5	41	12	54	11	M8x18	Φ6.8	119	136	1560	3120	1115
SC30WUU-B	LM30Ux2	30	39	78	59.5	49	15	58	10	M8x18	Φ6.8	132	146	2490	5480	1375
SC35WUU-B	LM35Ux2	34	45	90	68	54	18	70	10	M8x18	Φ6.8	140	160	2650	6260	2200
SC40WUU-B	LM40Ux2	40	51	102	78	62	20	80	11	M10x25	Φ8.6	150	180	3440	8020	3200
SC50WUU-B	LM50Ux2	52	61	122	102	80	24	100	11	M10x25	Φ8.6	200	230	6110	15860	6720

Part Number Notation

SC 20 V UU N - A N S



- Aluminum Case Unit
- Nominal Shaft Diameter
- Compact type
- Seal

Blank	No Seal
UU	Both Side Seal
U	One Side Seal

- New type
- Retainer (material)

Blank	Resin Retainer(Standard)
A	Steel Retainer(High temperature) <sup>★1</sup>

- Outer-sleeves (by corrosion resistance)

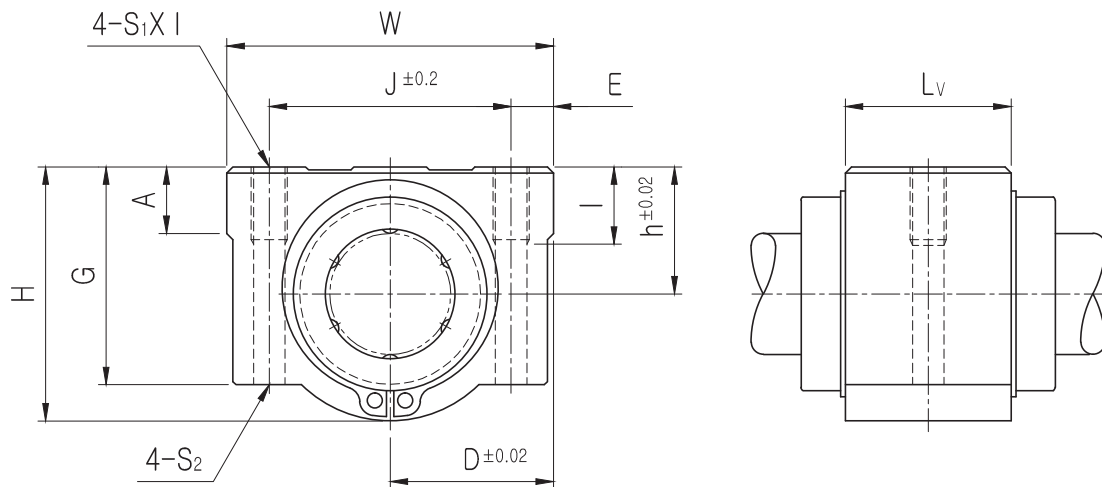
Blank	Standard(SUJ2)
N	Electroless nickel plating
R	Raydent treatment

- Ball type (material)

Blank	High carbon bearing steel ball(Standard)
S	Stainless steel ball

★1 Steel retainer applicable from SC8V to SC25V only

# SC\_V ALUMINUM CASE UNIT



PART NUMBER	L/B	h	D	W	H	G	A	J	E	S <sub>1</sub> x l	S <sub>2</sub>	L <sub>v</sub>	BASIC LOAD RATING(N) <sup>*4</sup>		WEIGHT (gf) <sup>*2</sup>
													DYNAMIC (C) <sup>*1</sup>	STATIC (Co)	
SC8VUU-B	LM8UU	11	17	34	22	18	6	24	5	M4x8	Φ3.4	15.4	260	400	36
SC10VUU-B	LM10UU	13	20	40	26	21	8	28	6	M5x10	Φ4.3	19.5	370	540	63
SC12VUU-B	LM12UU	15	22	44	30	24.5	8	33	5.5	M5x12	Φ4.3	20.5	410	590	74
SC12VUUN-B	LM12UU	15	21	42	28	24	7.4	30.5	5.75	M5x12	Φ4.3	20.5	410	590	74
SC13VUU-B	LM13UU	15	22	44	30	24.5	8	33	5.5	M5x12	Φ4.3	20.5	500	770	85
SC16VUU-B	LM16UU	19	25	50	38.5	32.5	9	36	7	M5x12	Φ4.3	23.5	770	1170	132
SC20VUU-B	LM20UU	21	27	54	41	35	11	40	7	M6x12	Φ5.2	27.4	860	1370	170
SC25VUU-B	LM25UU	26	38	76	51.5	41	12	54	11	M8x18	Φ6.8	37.4	980	1560	405
SC30VUU-B	LM30UU	30	39	78	59.5	49	15	58	10	M8x18	Φ6.8	40.9	1560	2740	495
SC35VUU-B	LM35UU	34	45	90	68	54	18	70	10	M8x18	Φ6.8	45.4	1660	3130	790
SC40VUU-B	LM40UU	40	51	102	78	62	20	80	11	M10x25	Φ8.6	56.4	2150	4010	1220
SC50VUU-B	LM50UU	52	61	122	102	80	24	100	11	M10x25	Φ8.6	68.9	3820	7930	2300

## Part Number Notation

**SCJ 20 UU - A N S**



● Aluminum Case Unit(Adjustable type)

● Nominal Shaft Diameter

● Seal

Blank	No Seal
UU	Both Side Seal
U	One Side Seal

● Retainer (material)

Blank	Resin Retainer(Standard)
A	Steel Retainer(High temperature) ★1

● Outer-sleeves (by corrosion resistance)

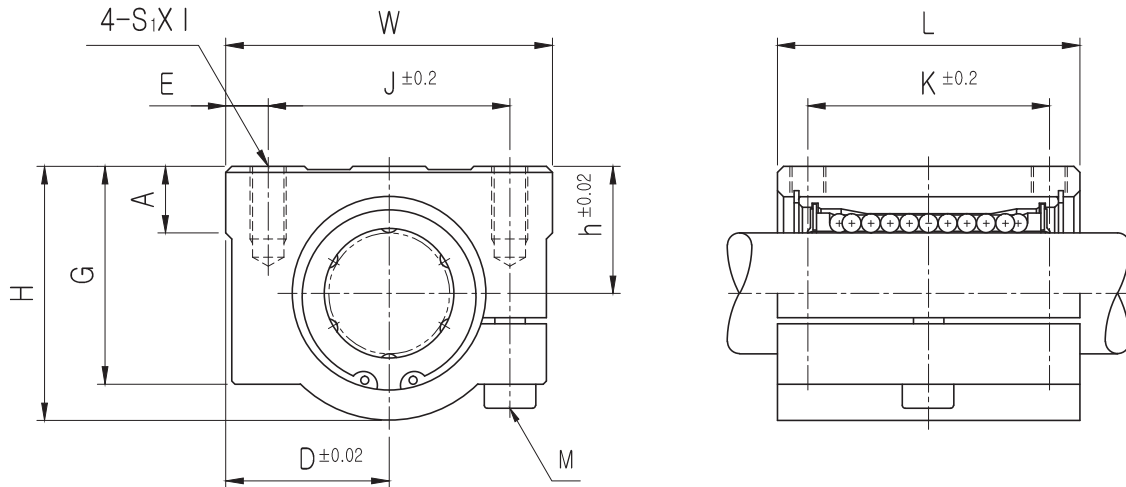
Blank	Standard(SUJ2)
N	Electroless nickel plating
R	Raydent treatment

● Ball type (material)

Blank	High carbon bearing steel ball(Standard)
S	Stainless steel ball

★1 Steel retainer applicable from SCJ10 to SCJ25 only

# SCJ ADJUSTABLE ALUMINUM CASE UNIT



PART NUMBER	L/B	h	D	W	H	G	A	J	E	S <sub>x</sub> l	K	L	M	BASIC LOAD RATING(N) <sup>*4</sup>		OUTER DIAMETER	WEIGHT (gf) <sup>*2</sup>
														DYNAMIC (C) <sup>*1</sup>	STATIC (Co)		
SCJ10UU	LM10UUAJ	13	20	40	26	21	8	28	6	M5x12	21	35	M4	370	540	Φ10	90
SCJ12UU	LM12UUAJ	15	21	42	28	24	7.4	30.5	5.75	M5x12	26	36	M4	410	590	Φ12	112
SCJ13UU	LM13UUAJ	15	22	44	30	24.5	8	33	5.5	M5x12	26	39	M4	500	770	Φ13	123
SCJ16UU	LM16UUAJ	19	25	50	38.5	32.5	9	36	7	M5x12	34	44	M4	770	1170	Φ16	189
SCJ20UU	LM20UUAJ	21	27	54	41	35	11	40	7	M6x12	40	50	M5	860	1370	Φ20	237
SCJ25UU	LM25UUAJ	26	38	76	51.5	41	12	54	11	M8x18	50	67	M6	980	1560	Φ25	555
SCJ30UU	LM30UUAJ	30	39	78	59.5	49	15	58	10	M8x18	58	72	M6	1560	2740	Φ30	685
SCJ35UU	LM35UUAJ	34	45	90	68	54	18	70	10	M8x18	60	80	M6	1660	3130	Φ35	1100
SCJ40UU	LM40UUAJ	40	51	102	78	62	20	80	11	M10x25	60	90	M8	2150	4010	Φ40	1600
SCJ50UU	LM50UUAJ	52	61	122	102	80	24	100	11	M10x25	80	110	M8	3820	7930	Φ50	3350



## Part Number Notation

**SBR 20 UU - N S**



- Aluminum Case Unit(Open type)
- Nominal Shaft Diameter
- Seal

Blank	No Seal
UU	Both Side Seal
U	One Side Seal

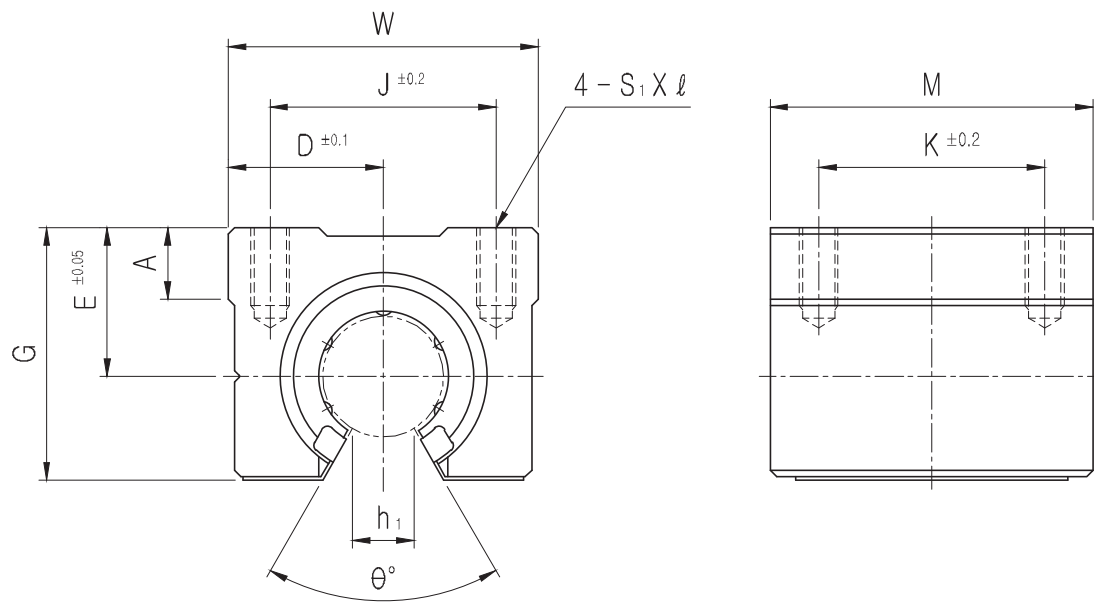
- Outer-sleeves (by corrosion resistance)

Blank	Standard(SUJ2)
N	Electroless nickel plating
R	Raydent treatment

- Ball type (material)

Blank	High carbon bearing steel ball(Standard)
S	Stainless steel ball

# SBR ALUMINUM CASE UNIT



PART NUMBER	L/B	D	W	G	$\theta$	A	M	$S_1 \times l$	$h_1$	E	J	K	BASIC LOAD RATING(N) <sup>*4</sup>		WEIGHT (gf) <sup>*2</sup>
													DYNAMIC (C) <sup>*1</sup>	STATIC (Co)	
SBR16UU	LM16UUOP	22.5	45	33	80°	9	45	M5x12	11	20	32	30	770	1170	150
SBR20UU	LM20UUOP	24	48	39	60°	11	50	M6x12	11	23	35	35	860	1370	200
SBR25UU	LM25UUOP	30	60	47	50°	14	65	M6x12	12	27	40	40	980	1560	450
SBR30UU	LM30UUOP	35	70	56	50°	15	70	M8x18	15	33	50	50	1560	2740	630
SBR35UU	LM35UUOP	40	80	63	50°	18	80	M8x18	17	37	55	55	1660	3130	920
SBR40UU	LM40UUOP	45	90	72	50°	20	90	M10x20	20	42	65	65	2150	4010	1330
SBR50UU	LM50UUOP	60	120	91	50°	25	110	M10x20	25	53	94	80	3820	7930	3000

## Part Number Notation

**TBR 20 UU - N S**



● Aluminum Case Unit(Open type)

● Nominal Shaft Diameter

● Seal

Blank	No Seal
UU	Both Side Seal
U	One Side Seal

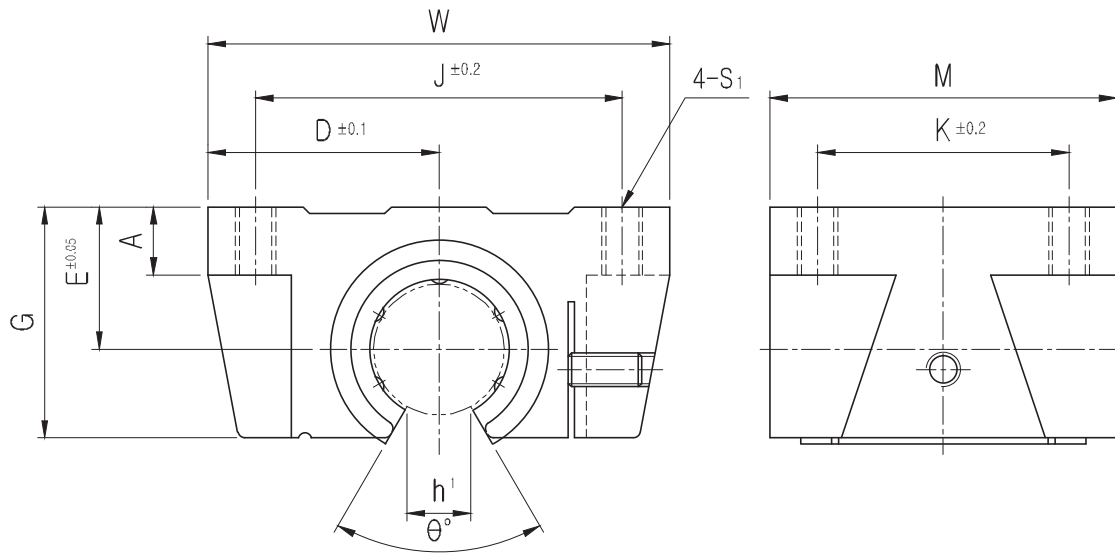
● Outer-sleeves (by corrosion resistance)

Blank	Standard(SUJ2)
N	Electroless nickel plating
R	Raydent treatment

● Ball type (material)

Blank	High carbon bearing steel ball(Standard)
S	Stainless steel ball

# TBR ALUMINUM CASE UNIT



PART NUMBER	L/B	D	W	G	$\theta$	A	M	$S_1$	$h_1$	E	J	K	BASIC LOAD RATING(N) <sup>*4</sup>		WEIGHT (gf) <sup>*2</sup>
													DYNAMIC (C) <sup>*1</sup>	STATIC (Co)	
TBR16UU	LM16UUOP	31	62	26	80°	8	42	M5	11	18	50	30	392	490	180
TBR20UU	LM20UUOP	34	68	31	60°	10	51	M6	11	21	54	37	784	1176	300
TBR25UU	LM25UUOP	41	82	41	50°	12	65	M8	12	28	65	50	1568	2352	600
TBR30UU	LM30UUOP	45.5	91	48	50°	12	75	M8	15	34	75	60	1764	2940	900

## Part Number Notation

**SCE 20 UU - A N S**



● European Standard Aluminum Case Unit

● Nominal Shaft Diameter

● Seal

Blank	No Seal
UU	Both Side Seal
U	One Side Seal

● Retainer (material)

Blank	Resin Retainer(Standard)
A	Steel Retainer(High temperature) *1

● Outer-sleeves (by corrosion resistance)

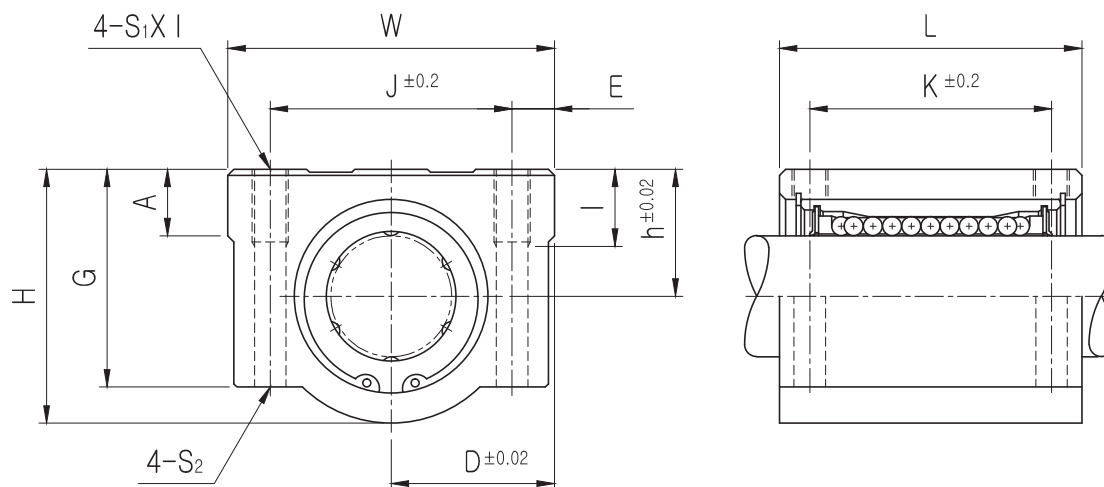
Blank	Standard(SUJ2)
N	Electroless nickel plating
R	Raydent treatment

● Ball type (material)

Blank	High carbon bearing steel ball(Standard)
S	Stainless steel ball

★1 Steel retainer applicable from SCE8 to SCE25 only

# SCE ALUMINUM CASE UNIT



PART NUMBER	L/B	h	D	W	H	G	A	J	E	S <sub>1</sub> ×l	S <sub>2</sub>	K	L	BASIC LOAD RATING(N) <sup>*4</sup>		WEIGHT (gf) <sup>*2</sup>
														DYNAMIC (C) <sup>*1</sup>	STATIC (C <sub>0</sub> )	
SCE8UU-B	LME8UU	11	17	34	22	18	6	24	5	M4×8	Φ3.4	18	30	260	400	60
SCE12UU-B	LME12UU	15	22	44	30	24.5	8	33	5.5	M5×10	Φ4.3	26	39	410	590	118
SCE16UU-B	LME16UU	19	25	50	38.5	32.5	9	36	7	M5×12	Φ4.3	34	44	770	1170	180
SCE20UU-B	LME20UU	21	27	54	41	35	11	40	7	M6×12	Φ5.2	40	53	860	1370	245
SCE25UU-B	LME25UU	26	38	76	51.5	41	12	54	11	M8×18	Φ6.8	50	67	980	1560	550
SCE30UU-B	LME30UU	30	39	78	59.5	49	15	58	10	M8×18	Φ6.8	58	76	1560	2740	760
SCE40UU-B	LME40UU	40	51	102	78	62	20	80	11	M10×25	Φ8.6	60	90	2150	4010	1700
SCE50UU-B	LME50UU	52	61	122	102	80	24	100	11	M10×25	Φ8.6	80	110	3820	7930	2950

## Part Number Notation

**SCE 20 W UU - A N S**



- Aluminum Case Unit
- Nominal Shaft Diameter
- Linear Bushing Long Type (for high load)
- Seal

Blank	No Seal
UU	Both Side Seal
U	One Side Seal

- Retainer (material)

Blank	Resin Retainer(Standard)
A	Steel Retainer(High temperature) <sup>★1</sup>

- Outer-sleeves (by corrosion resistance)

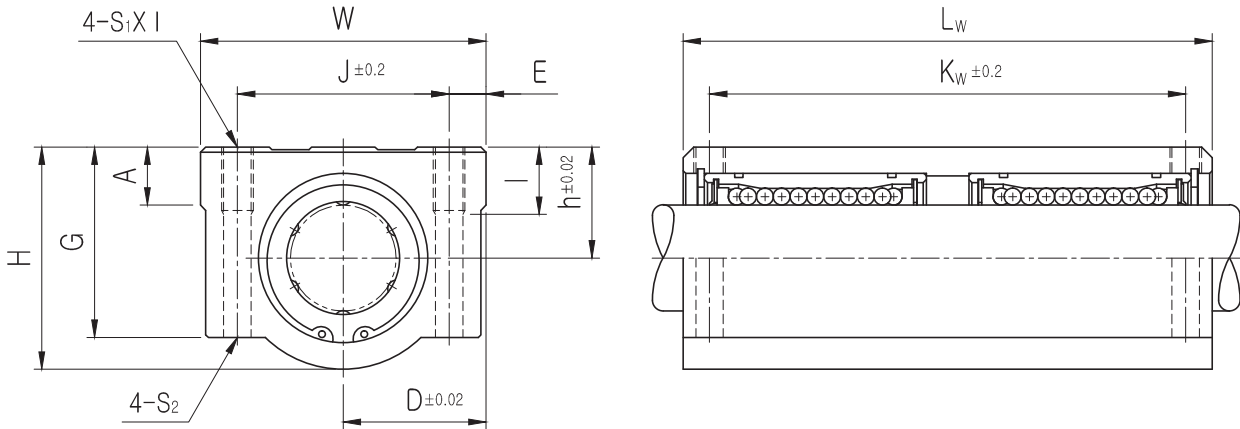
Blank	Standard(SUJ2)
N	Electroless nickel plating
R	Raydent treatment

- Ball type (material)

Blank	High carbon bearing steel ball(Standard)
S	Stainless steel ball

★1 Steel retainer applicable from SCE8W to SCE25W only

# SCE\_W ALUMINUM CASE UNIT



PART NUMBER	L/B	h	D	W	H	G	A	J	E	S <sub>1</sub> ×l	S <sub>2</sub>	K <sub>w</sub>	L <sub>w</sub>	BASIC LOAD RATING(N) <sup>*4</sup>		WEIGHT (gf) <sup>*2</sup>
														DYNAMIC (C) <sup>*1</sup>	STATIC (C <sub>0</sub> )	
SCE8WUU-B	LME8U×2	11	17	34	22	18	6	24	5	M4×8	Φ3.4	42	58	410	800	98
SCE12WUU-B	LME12U×2	15	22	44	30	24.5	8	33	5.5	M5×10	Φ4.3	64	77	650	1180	232
SCE16WUU-B	LME16U×2	19	25	50	38.5	32.5	9	36	7	M5×12	Φ4.3	79	89	1230	2340	360
SCE20WUU-B	LME20U×2	21	27	54	41	35	11	40	7	M6×12	Φ5.2	90	106	1370	2740	490
SCE25WUU-B	LME25U×2	26	38	76	51.5	41	12	54	11	M8×18	Φ6.8	119	136	1560	3120	1100
SCE30WUU-B	LME30U×2	30	39	78	59.5	49	15	58	10	M8×18	Φ6.8	132	154	2490	5480	1525
SCE40WUU-B	LME40U×2	40	51	102	78	62	20	80	11	M10×25	Φ8.6	150	180	3440	8020	3400
SCE50WUU-B	LME50U×2	52	61	122	102	80	24	100	11	M10×25	Φ8.6	200	230	6110	15860	5920



## Part Number Notation

**SCE 20 V UU - A N S**



● European Standard Aluminum Case Unit

● Nominal Shaft Diameter

● Compact type

● Seal

Blank	No Seal
UU	Both Side Seal
U	One Side Seal

● Retainer (material)

Blank	Resin Retainer(Standard)
A	Steel Retainer(High temperature) <sup>★1</sup>

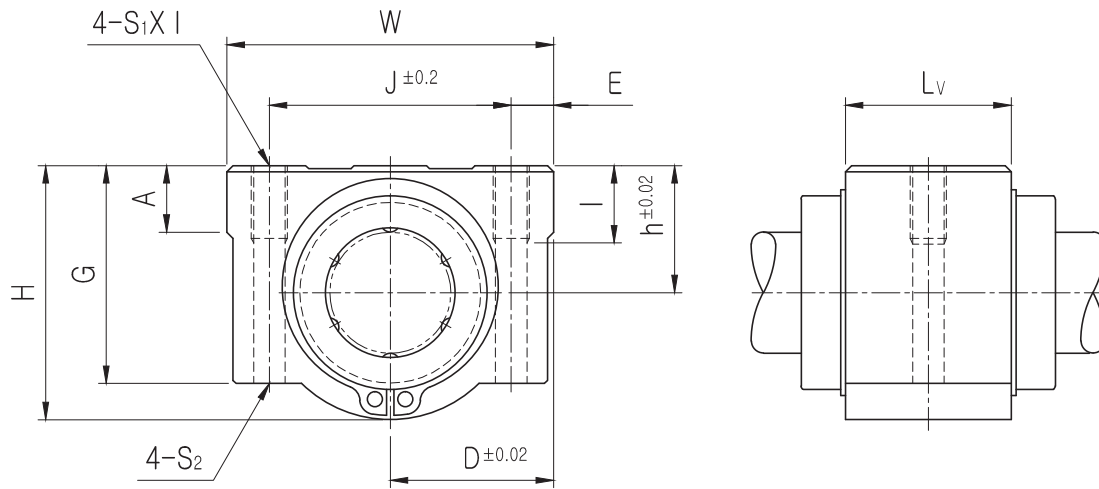
● Outer-sleeves (by corrosion resistance)

Blank	Standard(SUJ2)
N	Electroless nickel plating
R	Raydent treatment

● Ball type (material)

Blank	High carbon bearing steel ball(Standard)
S	Stainless steel ball

★1 Steel retainer applicable from SCE8V to SCE25V only



PART NUMBER	L/B	h	D	W	H	G	A	J	E	S <sub>1</sub> x l	S <sub>2</sub>	L <sub>V</sub>	BASIC LOAD RATING(N) <sup>*4</sup>		WEIGHT (gf) <sup>*2</sup>
													DYNAMIC (C) <sup>*</sup>	STATIC (C <sub>0</sub> )	
SCE8VUU-B	LME8UU	11	17	34	22	18	6	24	5	M4x8	Φ3.4	14.4	260	400	40
SCE12VUU-B	LME12UU	15	22	44	30	24.5	8	33	5.5	M5x10	Φ4.3	20.3	410	590	82
SCE16VUU-B	LME16UU	19	25	50	38.5	32.5	9	36	7	M5x12	Φ4.3	22.3	770	1170	122
SCE20VUU-B	LME20UU	21	27	54	41	35	11	40	7	M6x12	Φ5.2	28.3	860	1370	176
SCE25VUU-B	LME25UU	26	38	76	51.5	41	12	54	11	M8x18	Φ6.8	40.4	980	1560	400
SCE30VUU-B	LME30UU	30	39	78	59.5	49	15	58	10	M8x18	Φ6.8	48.4	1560	2740	570
SCE40VUU-B	LME40UU	40	51	102	78	62	20	80	11	M10x25	Φ8.6	56.4	2150	4010	1320
SCE50VUU-B	LME50UU	52	61	122	102	80	24	100	11	M10x25	Φ8.6	72.3	3820	7930	1900