

## Part Number Notation

**SBS C g6 30 - 1000 L**

● Support Rail Unit

SBS	Support Rail Unit for SBR
TBS	Support Rail Unit for TBR

● Shaft (by corrosion resistance)

Blank	No plating (Standard)
C	Chrome plated shaft
N	Nickel plated shaft*1
R	Raydent treated shaft

● Shaft tolerance

g6	Asian standard
h6	European standard

● Shaft Diameter

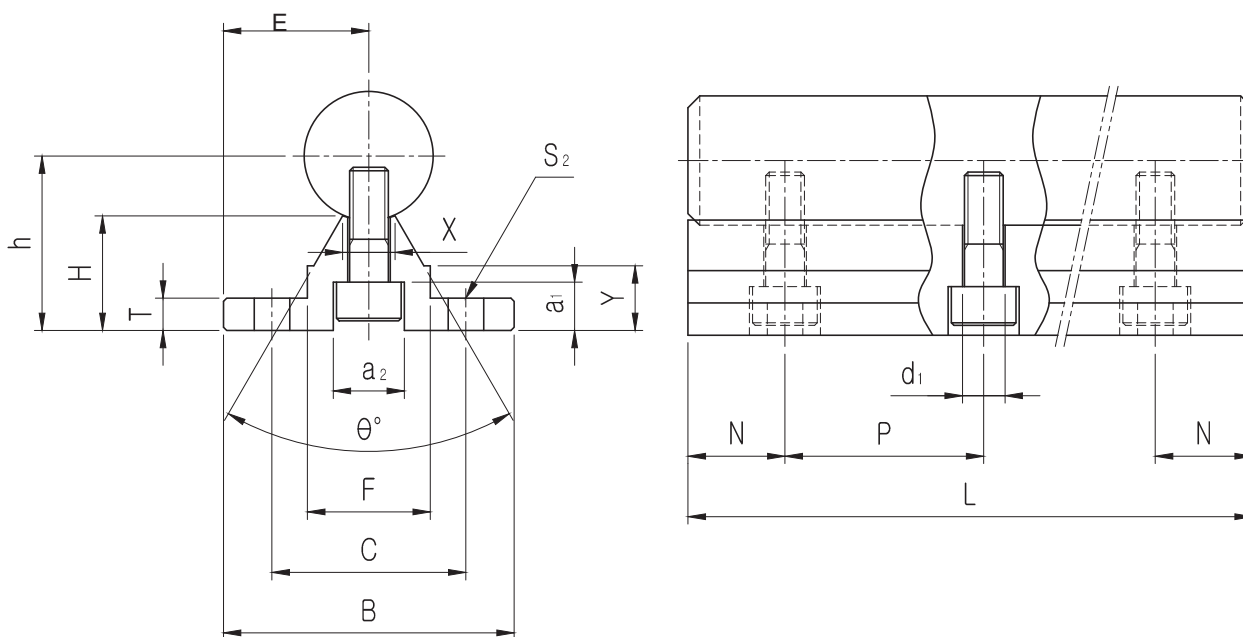
16~50mm
---------

● Shaft Length

100~3000mm
------------



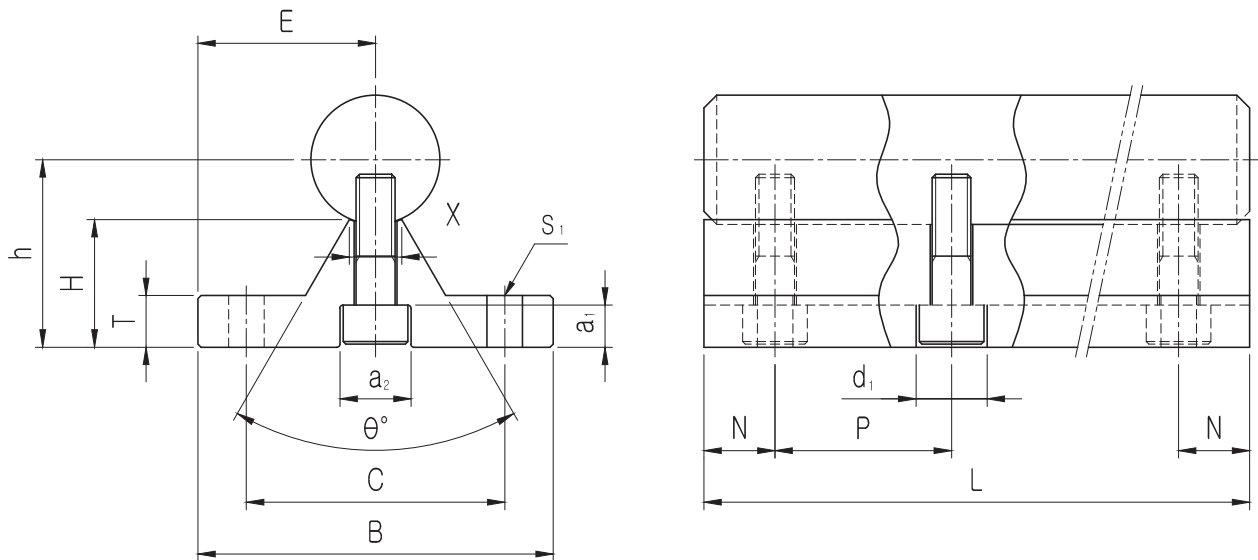
# SBS SUPPORT RAIL UNIT



PART NUMBER	LM SHAFT OUTER DIAMETER	E	h	B	H	T	F	X	Y	C	$\theta$	$S_1$	$a_1$	$a_2$	$d_1$	WEIGHT (kgf/m)
SBS16	Φ16	20	25	40	17.79	5	18.5	8	11.7	30	80°	Φ5.5	6	9.5	5.5	2.56
SBS20	Φ20	22.5	27	45	17.72	5	19	8	10	30	50°	Φ5.5	6.5	11	6.6	3.50
SBS25	Φ25	27.5	33	55	21.13	6	21.5	8	12	35	50°	Φ6.6	6.5	11	6.6	5.30
SBS30	Φ30	30	37	60	22.85	7	26.5	10.3	13	40	50°	Φ6.6	8.5	14	9	7.38
SBS35	Φ35	32.5	43	65	26.62	8	28	13	15.5	45	50°	Φ9	8.5	14	9	9.68
SBS40	Φ40	37.5	48	75	29.43	9	38	16	17	55	50°	Φ9	8.5	14	9	12.69
SBS50	Φ50	47.5	62	95	38.79	11	45	20	21	70	50°	Φ11	12.5	19	11	20.46

PART NUMBER	MAX. LENGTH (mm)	P	N x NH												
			500	600	800	1000	1200	1400	1600	1800	2000	2200	2400	2600	3000
SBS16	3000	150	25x3	75x3	100x4	50x6	75x7	25x9	50x10	75x11	25x13	50x14	75x15	25x17	75x19
SBS20	3000	150	25x3	75x3	100x4	50x6	75x7	25x9	50x10	75x11	25x13	50x14	75x15	25x17	75x19
SBS25	3000	200	50x2	100x2	100x3	100x4	100x5	100x6	100x7	75x11	25x13	50x14	75x15	25x17	75x19
SBS30	3000	200	50x2	100x2	100x3	100x4	100x5	100x6	100x7	75x11	25x13	50x14	75x15	25x17	75x19
SBS35	3000	200	50x2	100x2	100x3	100x4	100x5	100x6	100x7	75x11	25x13	50x14	75x15	25x17	75x19
SBS40	3000	200	50x2	100x2	100x3	100x4	100x5	100x6	100x7	75x11	25x13	50x14	75x15	25x17	75x19
SBS50	3000	200	50x2	100x2	100x3	100x4	100x5	100x6	100x7	75x11	25x13	50x14	75x15	25x17	75x19

# SBS SUPPORT RAIL UNIT



PART NUMBER	LM SHAFT OUTER DIAMETER	E	h	B	H	T	X	C	$\theta$	S <sub>1</sub>	a <sub>1</sub>	a <sub>2</sub>	d <sub>1</sub>	WEIGHT (kg/m)
TBS16	Φ16	25	22	50	14.79	6	8	37	60°	Φ5.5	6	9.5	5.5	2.66
TBS20	Φ20	27.5	29	55	19.72	8	8	40	50°	Φ5.5	6.5	11	6.6	4.23
TBS25	Φ25	32.5	32	65	20.13	10	8	45	50°	Φ6.6	6.5	11	6.6	5.85
TBS30	Φ30	37.5	36.5	75	22.35	12	10.3	55	50°	Φ6.6	8.5	14	9	8.25

PART NUMBER	MAX. LENGTH (mm)	P	N × NH												
			500	600	800	1000	1200	1400	1600	1800	2000	2200	2400	2600	3000
TBS16	3000	150	25x3	75x3	100x4	50x6	75x7	25x9	50x10	75x11	25x13	50x14	75x15	25x17	75x19
TBS20	3000	150	25x3	75x3	100x4	50x6	75x7	25x9	50x10	75x11	25x13	50x14	75x15	25x17	75x19
TBS25	3000	200	50x2	100x2	100x3	100x4	100x5	100x6	100x7	100x8	100x9	100x10	100x11	100x12	100x14
TBS30	3000	200	50x2	100x2	100x3	100x4	100x5	100x6	100x7	100x8	100x9	100x10	100x11	100x12	100x14