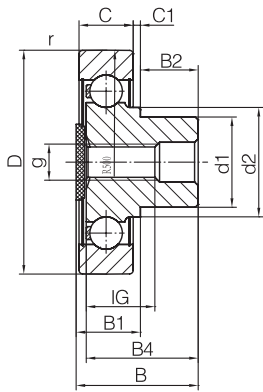
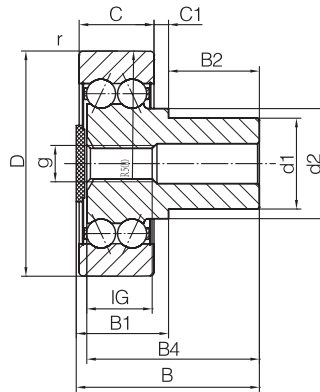


Stud type track rollers ZL2, ZL52



ZL2..-DRS



ZL52..-DRS



Code	D	d1	B	B1	B2	B4	C	C1	d2	g	lg	R	rmin	mass	Cr w	C0r w	Cur w	nD G
	mm			max										kg	N	N	N	1/min
ZL202-DRS	40	16	23,8	14	10	21,5	11	2	20	M8	15	500	0,6	0,08	7000	3350	170	8500
ZL203-DRS	47	18	26,5	14,5	12	24,5	12	2	22,9	M8	16	500	0,6	0,12	8900	4450	223	6500
ZL204-DRS	52	20	30,7	17	14	28,5	14	2	26,8	M10	18	500	1	0,17	11300	5700	295	6000
ZL205-DRS	62	25	33,8	18	16	31	15	2	30,3	M10	19	500	1	0,25	13300	7100	360	5500
ZL5201-DRS	35	14	33,2	19,5	14	31	15,9	2,6	17,1	M8	14	500	0,6	0,09	8700	5200	260	7500
ZL5202-DRS	40	16	36,2	20,5	16	34	15,9	3,5	20	M8	15	500	0,6	0,12	10000	6300	320	7000
ZL5203-DRS	47	18	39,5	21,5	18	37,5	17,5	3,5	22,9	M8	15	500	0,6	0,19	12800	8400	420	5500
ZL5204-DRS	52	20	45,3	25,5	20	43	20,6	4	26,8	M10	18	500	1	0,25	16100	10700	550	5000
ZL5205-DRS	62	25	50,4	25,5	25	47,5	20,6	4	30,3	M10	18	500	1	0,38	18800	13200	670	4500
ZL5206-DRS	72	30	59	29	30	56,5	23,8	4,5	37,3	M16	20	500	1	0,55	25000	18000	930	3500
ZL5207-DRS	80	35	69,2	33,5	36	66,5	27	5,5	42,4	M16	20	500	1,1	0,71	31000	22800	1200	2800

R - Crowning radius

Cr w - Effective dynamic load rating as track roller (radial)

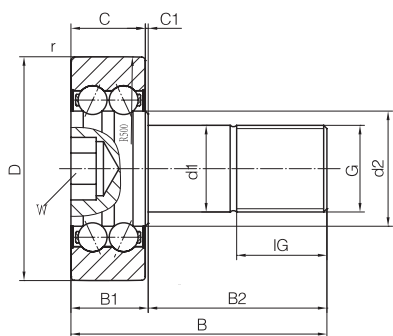
Cor w - Effective static load rating as track roller (radial)

Cur w - Fatigue limit load

nD G - Speed (with continuous operation and grease lubrication)

Stud type track rollers KR52

double row, lip seals on both sides



Code	D	d1	B	B1	B2	C	C1	d2	G	IG	R	rmin	W	mass	MA	Cr w	C0r w	Cur w	nD G
	mm			max										kg	Nm	N	N	N	1/min
KR5201-2RS	35	12	49,2	17	32,5	15,9	0,8	17,1	M12X1,5	17	500	0,6	6	0,12	45	8700	5200	260	7500
KR5202-2RS	40	16	53,2	17	36,5	15,9	0,8	20	M16X1,5	19	500	0,6	8	0,19	70	10000	6300	320	7000
KR5203-2RS	47	18	58,8	18,5	40,5	17,5	0,8	22,9	M18X1,5	21	500	0,6	8	0,29	115	12800	8400	420	5500
KR5204-2RS	52	20	63,6	22,5	41,5	20,6	1,5	26,8	M20X1,5	21	500	1	10	0,38	160	16100	10700	550	5000
KR5205-2RS	62	24	70,9	21,5	49,5	20,6	0,8	30,3	M24X1,5	25	500	1	10	0,58	290	18800	13200	670	4500
KR5206-2RS	72	24	74,1	25	49,5	23,8	0,8	37,3	M24X1,5	25	500	1	10	0,8	290	25000	18000	930	3500
KR5207-2RS	80	30	91	28	63	27	1	42,4	M30X1,5	32	500	1,1	12	1,2	600	31000	22800	1200	2800

R - Crowning radius

Cr w - Effective dynamic load rating as track roller (radial)

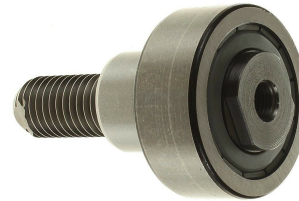
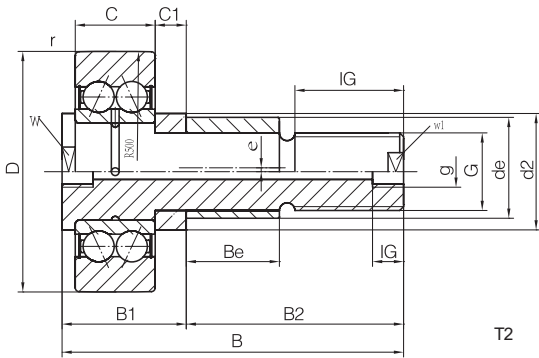
C0r w - Effective static load rating as track roller (radial)

Cur w - Fatigue limit load

nD G - Speed (with continuous operation and grease lubrication)

Stud type track rollers ZLE52-2Z

double row, eccentric stud, gap seals on both sides



ZLE52...-2Z

Number	D	de	B	B1 max	B2	Be	C	C1	d2	e	G	g
	mm											
ZLE5201-2Z	35	18	65,5	20,5	45	18	15,9	2	25	1	M12X1,5	M6
ZLE5202-2Z	40	22	66,5	21,5	45	16	15,9	2,5	27	1	M14	M8X1
ZLE5204-2Z	52	24	76	26	50	18	20,6	2,5	30	1	M20X1,5	M8X1
ZLE5205-2Z	62	24	88	32	56	25	20,6	8	30	1	M20X1,5	M8X1
ZLE5207-2Z	80	35	99	35	64	29	27	3	45	1,5	M30X1,5	M8X1

Continued

Number	IG min	lg	R	rmin	W	W1	m	MA	Cr w	C0r w	Cur w	Fr per	nD G
	mm						kg	Nm	N	N	N	N	1/min
ZLE5201-2Z	24	6	500	0,6	15	9	0,25	30	8800	6000	305	4800	11100
ZLE5202-2Z	25	8	500	0,6	17	10	0,35	40	10800	7500	385	7500	10200
ZLE5204-2Z	29	8	500	1	22	17	0,46	150	16900	12300	640	10200	7300
ZLE5205-2Z	28	8	500	1	22	17	0,64	150	19700	15400	790	15400	6500
ZLE5207-2Z	32	8	500	1,1	40	27	1,3	540	33000	26500	1410	22200	4650

R - Crowning radius

Cr w - Effective dynamic load rating as track roller (radial)

Cor w - Effective static load rating as track roller (radial)

Cur w - Fatigue limit load

nD G - Speed (with continuous operation and grease lubrication)