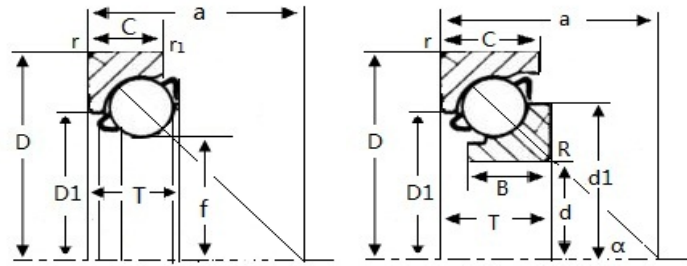


Thrust Angular Contact Ball Bearings

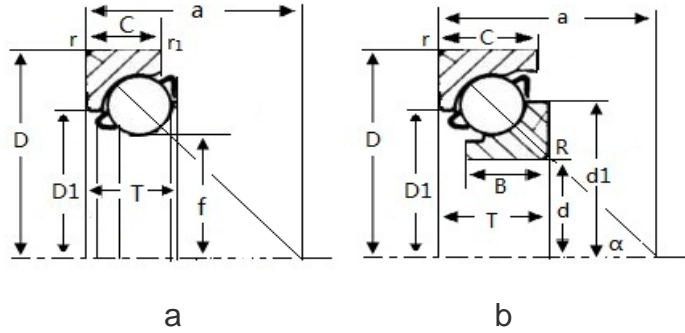


a

b

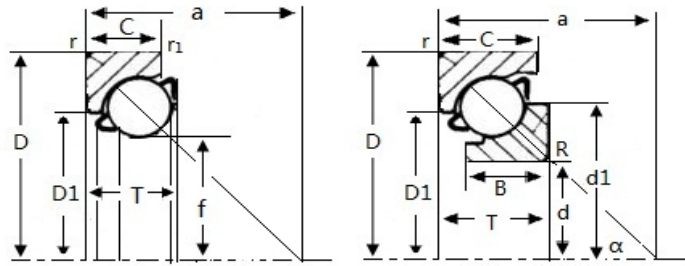
Item	Basic Dim.(mm)							Mass (kg)	Pic.	OEM No Other Code	Application
	d (f)	D	T	B	C	d1	D1				
STB001	13	35.2	11		11			0.049	a	ACS0304K-1	
STB002	14.3	36.517	9.65		6.48		6.48	0.043	a	7334145 RE44348 INA F44348 SKF 633089A	GM Chevrolet Ford
STB003	14.3	31.717	9.65		6.48		6.48	0.034	a	7334146 RE44349 INA F44349 SKF 633089A	GM Taunos Ford, Fiat Opel, Dodge
STB004	15	35	11		11			0.045	a	15BCS02 15BSW02	Suzuki
STB005	17	32	10.11		10.11		10.11	0.034	a	M307487 411.71725	VW
STB006	15.3	35	7.5		7.5		22.7	0.04	a	VBT15Z-1	
STB007	15.3	35	10.5		10.5		27	0.044	a	ACS0304-2 128202K	
STB008	15.3	35	11		11		22.7	0.044	a	VBT15Z-2	
STB009	17	32	10.11		10.11			0.034	a	M307487	
STB010	17	42	13		13			0.08	a	17BSW02	
STB011	17.77	38	7.75		7.75				a	VBT17Z-1 ASA27411	Toyota
STB012	17.77	38	10.9		10.9			0.055	a	VBT17Z-2	Toyota
STB013	17.77	40	11		11		25		a	VBT17Z-3 ACS0304	Toyota
STB014	17.77	40	10.9		10.9		25		a	VBT17Z-4	Toyota
STB015	17.77	40	13		13				a	VBT17Z-5	Toyota
STB016	17.75	42	13		13		28.1		a	17VBSW02	Toyota
STB017	18.7	40	10		10				a	18BCS01	
STB018	19	38.1	10.5		7.9		27.5	0.044	a	GM 5666683/93 SKF 311161/42 BCA 8537 INA F-110085 ACS0404F	Ford Dodge
STB019	19.2	41	7.75		7.75		27.2	0.061	a	ACS0404	
STB020	19.2	41	11.5		11.5		19.75		a	VTAA19Z-1	
STB021	19.2	41	9.5		9.5		19.75		a	VTAA19Z-2	

Thrust Angular Contact Ball Bearings



Item	Basic Dim.(mm)							Mass (kg)	Pic.	OEM No Other Code	Application
	d (f)	D	T	B	C	d1	D1				
STB022	19.2	41	9.5		9.5		27		a	VTAA19Z-3	
STB023	19.2	41	12		12		27	0.07	a	VTAA19Z-4 19BSW02	
STB024	19.492	41	11		11		27.2		a	ACS0404-1	
STB025		41			11.5				a	VBT19Z-1	Toyota
STB026	20	43	12.5		12.5			0.069	a	ACS040412 90369-43001	Toyota Mitsubishi
STB027	20	43	12		12		29.9	0.066	a	VTAA20Z-1	
STB028	20	44	12		12				a	VBT20Z-1 20BSW03	Toyota
STB029	20.62	44	12		12				a	128702A	
STB030		42	13.5		13.5				a	VBT21Z-1	Toyota
STB031	21	46	13.5		13.5			0.095	a	VTAA21Z-1	
STB032	28.7	53.975	13.9		8.8		8.8	0.095	a	C4TZ3552A/71A	Ford
STB033	28.7	58.737	13.9		9.3		9.3	0.127	a	C4TZ3552A/71A	Ford
STB034	24.66	45.95	13.5		6.75		6.75	0.055	a	C6TZ3552A/71A	Ford
STB035	24.66	49.158	13.5		6.75		6.75	0.068	a	C6TZ3552A/71A	Ford
STB036	29.8	55.6	11.3		7.9		7.9	0.099	a	5673272/71	GM
STB037	42	65	13		13			0.124	a	ACS080613	
STB101	12	32	10	10	10				b	12BSW02A-1	
STB102	13	33	11	11	11			0.06	b	13BSW02A	
STB103	15	35	10	10	10				b	15BSW10	
STB104	15	35	11		11				b	15BCW02 13BSW01A	
STB105	15	35	11.9	11.9	10.9			0.048	b	ACS0304K-3	
STB106	15	35	12	12	12				b	ACS0304K	
STB107	15	35.25	12	12	12				b	15BSW06B	
STB108	15	40	13	13	13				b	15BSW05	
STB109	18	39	10.8	7.5					b	BT18-2	
STB110	18	47	13	9					b	BT18-1A	

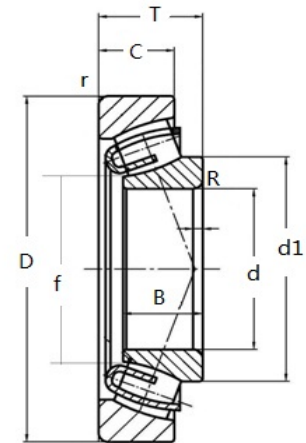
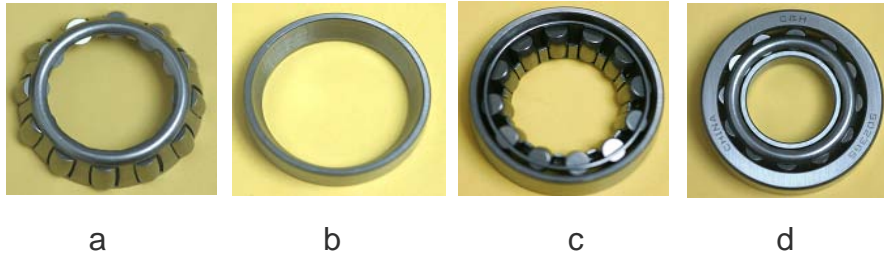
Thrust Angular Contact Ball Bearings



a

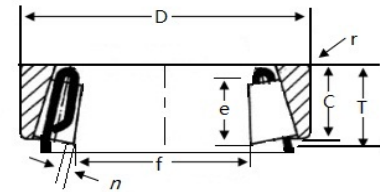
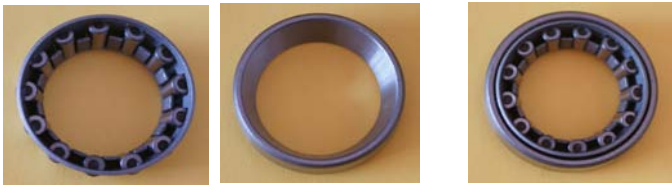
b

Item	Basic Dim.(mm)							Mass (kg)	Pic.	OEM No Other Code	Application
	d (f)	D	T	B	C	d1	D1				
STB111	18.72	38	10						b	BT18Z-1B1	Toyota
STB112	19.5	47	13.15	9				0.092	b	ACS0405J-2	
STB113	19.5	47	13	9				0.094	b	BT19Z-1A	
STB114	19.5	47	13.8	11					b	ACS0405J-4 90369-19001	Toyota
STB115	19.5	47	14	9	14				b	19BSW03 BT19Z-2	Toyota
STB116	20	47	14.25	14.3	11				b	ACS040514	
STB117	20	47	16						b	9168304 569304	
STB118	20	52	15		15			0.12	b	20BSW04A 20BSW01 ACS0405D-2 ACS0405K-2	Toyota
STB119	20	52	15.5					0.12	b	9168404 567404X3	
STB120	24	51	11	11	10				b	24BSW04	
STB121	25	50	9	9	8				b	25BSW01A	
STB122	25	52	16						b	9168305 569305	
STB123	25	60	18						b	9168405 567405X1	
STB124	25	62	17.5						b	ACS0506	Toyota
STB125	25	62	18.25	9					b	BT25Z-4	
STB126	26	62	18						b	168805 561305X1	
STB127	30	55.56	12.7	12.7	12.7			0.16	b	ASB3055	
STB128	30	60	18					0.17	b	9168306 569306 S70206X3D	EQ140
STB129	30	72	21	19					b	BT30-5A	



No.	Bore	Outer	Width			Mass (g)	Pic.	Other Code	Remark
	d	D	C(outer)	B(inner)	T				
10790S	23.8	38.3		11.5		34	a		
10790Z	33.7	44.501	9.84			40	b		
10790SZ	23.8	44.501	9.84	11.8	11.5	74	c		
10983R	30.8	47.4		12.38		48	a		
10983Z	42.4	55.613	10.6			68	b		
10983RZ	30.8	55.613	10.6	12.38	13	116	c		
509043	26.5	57	12.5	10.47	14.8	145	d	SKF 321449	
502365	26.5	55	12.5	9.9	14.25	131	d		

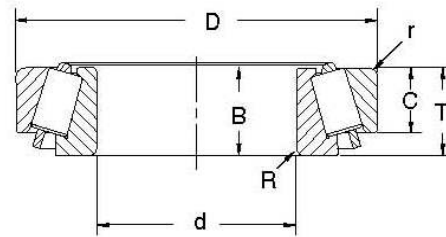
Inch Tapered Roller Bearings



a b c

Item	pic.	Base Dia. f	Outside Dia. D	Cup Width C	Bearing Width T	Race Length e	Rib Height n	Max Housing Fillet Radius r	Cone Angle	Weight kg	Other Code	OEM No	Application
5BC	a	28.313				7.854	1.727		25°-24'	0.025	68-3571A		Ford Pick-up Jeep Rural VW Kombi Chrysler
6	b		44.45	9.525				1.5		0.04			
6CE	b		49.146	19.05				spe.		0.125			
5BC/6	c	28.313	44.45	9.525	10.063	7.854	1.727	1.5	25°-24'	0.15	81645 211415231.2		
5BC/6CE	c	28.313	49.146	19.05	19.469	7.854	1.727	spe.	25°-24'	0.165	81646 211415232.2		
11BC	a	33.297				8.123	1.727		29°-58'	0.03	81T3571A 90023-68001		
13C	b		49.225	11.509				1.5		0.055	81T3552A 45426-98001		Ford Pick-up Toyota GM Pick-up Chrysler Volkswagen
14XS	b		57.092	17.094				2		0.175	81T3553A 45426-98002		
11BC/13C	c	33.297	49.225	11.509	12.845	8.123	1.727	1.5	29°-58'	0.205	81T3571A/52A 7329590		
11BC/14XS	c	33.297	57.092	17.094	18.456	8.123	1.727	2	29°-58'	0.23	81T3571A/53A 7329589		
35BC	a	43.193				11.113	2.794		31°-52'	0.062	BD2T3571A		
36X	b		64.287	13.096				1.5			BD2T3524B		Ford GM
38A	b		69.85	23.368				spe.			BD2T3552A		
35BC/36X	c	43.193	64.287	13.096	13.904	11.113	2.794	1.5	31°-52'		BD2T3571A/ BD2T3524B		
35BC/38A	c	43.193	69.85	23.368	24.176	11.113	2.794	spe.	31°-52'		BD2T3571A/ BD2T3552A		
45BC	a	56.469				11.113	2.794		41°-36'	0.08	9722/55041 65903		Fiat Benz Scania
46	b		79.375	13.208				1.5			9722/55042 65902		
47	b		87.313	25.654				spe.			9722/55043 65905		
45BC/46	c	56.469	79.375	13.208	14.605	11.113	2.794	1.5	41°-36'		9722/55041/042 3254620027 65903/65902		
45BC/47	c	56.469	87.313	25.654	27.051	11.113	2.794	spe.	41°-36'		9722/55041/043 3254620028 65903/65905		
977907	c	33.02	49.225	11	12.4					0.081	LR306/33.02 11BA/13C		
977907K	c	33.02	58		17.88					0.28	LR306/33.02X1 11BA/14XS		
977907K-1	c	33.02	58		17					0.28	LR306/33.02YB 11BA/13C		
977908	c	40.62	66		13.5					0.18	LR306/40.62 31BC/33		Jeep
977908K	c	40.62	68		19.5					0.3	LR306/40.62YB		Jeep
977908K-1	c	40.62	68		21					0.3	LR306/40.62X1		
977909K	c	46.673	72		17.2					0.25	LR306/46.673		
977910	c	56.62	68		21						LR306/56.62		

Metric Tapered Roller Bearings



Bearing No	Basic Dimensions (mm)					Mass g	Other Codes	Application
	d	D	B	C	T			
TR41X22.5X12	22.5	41	12	9	12	59	EP122.5	CG TODAY / CG TITAN
TR41X24X12	24	41	12	9	14	57	EP124	CG TODAY / CG TITAN
TR41X22X14.5	22	41	14.43	11.47	14.5	85	BCAB326332B	
TR41X22.5X14	22.5	41	14	11	14	80	320/22.5	
TR41X24X14	24	41	14	11	14	75	320.24	
TR43X25X12	25	43	12	9	12	62	EP143	RD / DT / YBR
TR45X25X15	25	45	15	11.5	15	100	32005/45	BIZ / DREAM
TR47X25X15	25	47	15	11.5	15	118	32005	BIZ / DREAM
TR47X26X15	26	47	15	11.5	15	115	32005/26	BIZ / DREAM
TR48X30X12	30	48	12	9	12	73	EP148	RD / DT / YBR
TR48.5X26X15	26	48.5	15	12	15	109	320/26	CG TODAY 125 / TITAN 125 FAN 125 / TITAN 150
TR48.5X27X18	27	48.5	18	12	18	117	320/27	CG TODAY 125 / TITAN 125 FAN 125 / TITAN 150
TR54X34X12	34	54	12	9	12	125		BIZ / DREAM
TR55X30X17	30	55	17	13	17	171	32006	BIZ / DREAM

Steering Bearings



Double Row Angular Contact Ball Bearings

- The rings and balls made by high quality Chrome Steel
- Fine raceway grinding, smooth running effect
- High tolerance Grade ABEC-3
- Long Service life
- Suggested nylon cage



Item	Basic Dim.(mm)							Mass (kg)	Pic.	OEM No Other Code	Application
	d (f)	D	T	B	C	d1	D1				
776701	12	49.4	40.1	40.1	31			0.337			
776801	12.75	47.615	38	38	25			0.334			
776901	12.75	51.615	38	38	24			0.334			

Moto Steering Stem Bearing Repair Kits



Kits de Moto Rolamento Coluna de Direcção

Material - Chrome Steel SAE 52100

Available with carbon steel

Cage - Steel Cage



C&H Kits No	Application	Upper Bearing	Lower Bearing	Remark
		Dim.(dxDxT) mm	Dim.(dxDxT) mm	
MST-001	HONDA	22.5 x 41 x 12	24 x 41 x 12	
MST-002	HONDA	26 x 48.5 x 15.2	30 x 50 x 14.4	
MST-003	KAWASAKI,SUZUKI,YAMAHA	25 x 47 x 15	30 x 55 x 17	
MST-005	HONDA	26 x 47 x 15	26 x 47 x 15	
MST-007	HONDA	26 x 47 x 15	30 x 55 x 17	
MST-008	HONDA	26 x 47 x 15	30 x 51 x 15	
MST-009	HONDA	30 x 51 x 15	30 x 51 x 15	
MST-010	HONDA	30 x 51 x 15	30 x 55 x 17	
MST-011	YAMAHA	25 x 43 x 12	30 x 48 x 12	
MST-012	SUZUKI ,YAMAHA	25 x 48 x 13	30 x 48 x 13	
MST-013	YAMAHA	25 x 48 x 15.2	30 x 48 x 15	
MST-014	SUZUKI,YAMAHA	25 x 48 x 16	27 x 48 x 14	
MST-015	SUZUKI	25 x 48 x 13	30 x 55 x 18	
MST-016	SUZUKI	30 x 55 x 17	30 x 55 x 17	
MST-017	KAWASAKI	30 x 48 x 14	30 x 48 x 12	
MST-018	KAWASAKI	30 x 48 x 14	30 x 52 x 17	
MST-019	KAWASAKI	25 x 47 x 15	28 x 52 x 16.5	
MST-020	KAWASAKI	35 x 55 x 14	35 x 55 x 14	
MST-021	BMW	34 x 51 x 12	34 x 52 x 12	
MST-022	BMW	28 x 52 x 16.5	28 x 52 x 16.5	

TTSP , TTC

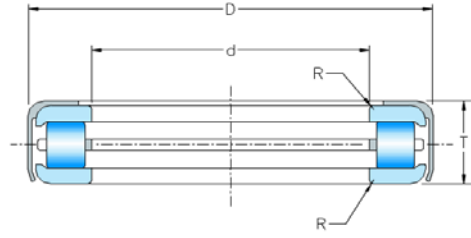
TTSP

Axial Cylindrical Roller



TTC

Axial Full Taper Roller



Code	d	D	T
T63	16.129	41.275	12.7
T77	19.304	41.275	12.7
T76	19.304	41.275	13.487
T86	20.256	39.688	14.288
T82	20.879	41.275	13.487
T83	20.879	42.164	13.487
T88	22.479	48.021	15.088
T89	22.479	48.021	15.875
T93	24.054	44.958	13.487
T94	24.054	48.021	15.088
T95	24.103	50.8	15.875
T101	25.654	50.8	15.875
T104	26.289	50.8	15.875
T107	27.229	50.8	15.875
T110	28.829	53.188	15.875
T113	28.829	55.562	15.875
T120	30.416	54.745	11.43
T119	30.416	55.562	15.875
T121	30.716	55.562	15.875
T126	32.004	55.562	15.875
T139	35.179	58.739	15.875
T142	35.179	62.708	19.431
T149	38.302	55.883	19.431
T158	40.234	65.883	19.431
T1760	44.623	76.2	10.922
T199	51.054	74.612	15.875
T309	78.583	102.395	15.875
T387	98.425	127	17.462
T484	123.012	152.4	17.462
T581	147.638	177	17.462

Code	d	D	T
T130	27.102	66.675	19.446
T1260	32.004	55.562	15.875
T128	32.004	66.675	18.654
T127	32.004	66.675	19.446
T1380	35.179	59.4	15.875
T136	35.179	66.675	18.654
T138	35.179	66.675	19.446
T144	36.754	66.675	19.446
T152	38.354	72.619	20.368
T151	38.354	72.619	21.433
T157	39.954	72.619	21.433
T178	40.386	73	19
T163	41.529	72.619	21.433
T169	43.104	82.956	23.812
T176	44.704	82.956	23.812
T177	45	73	20
T1775	45	74.5	20.221
T177A	45.484	73	20
T1921	46.279	80.01	15.977
T182	46.279	82.956	23.812
T1920	46.279	85.471	15.383
T189	47.879	82.956	23.02
T188	47.879	82.956	23.812
T1880	47.879	83.21	23.546
T1930	48.997	85.471	16.383
T1930	49.454	93.269	26.187
T194	49.454	93.269	26.975
T201	51.054	93.269	26.187
T202	51.054	93.269	26.975
T209	52.629	93.269	26.87
T208	52.629	93.269	26.975
T252	63.754	111.125	25.796
T251	63.754	111.125	26.988



Code	Type	Interchange	No. Origin	Application
5666683	anel exterior		GM 5666683 Ford C2AZ3552A Chrysler 2072062	GM 400,SPECIAL,SUPER,S.SPORT,LUXE, RALLY S.,CHEVY,MALIBU,SUPER COUPE- LUXE PICK-UP CS100,C10,CUSTOM, DIESEL ,SILV FORD Brougham, Country Sedan, Country Squire, Crown Victoria, Custom, Galaxy, E100,F100,P100,150 Series Econoline,Pick- up, Parcel Delivery (Truck 1/2 ton), E200, F200,P200,250 Series Econoline,Pick-up, Parcel Delivery (Truck 3/4 ton),E300, F300, P300,350series,F450, 3500E conoline, Pick- up, Parcel Delivery (Truck 1 ton) Fairlane, Torino, LTD II , Rancho,Falcon,Granada, LTD(Crown Victoria),Marverick, Mustang, Mustang II ,Thunderbird
5666693	esferas e gaiola		GM 5666693 FORD AJ33770A	
5666683/ 5666693	rolamento de esferas de contato angular axial	SKF 8537 BCA 311142/16 INA F110085	GM 5666683/93 FORD C2AZ3552A/70A CHRYSLER 2072062	
5673272	anel exterior		GM 5673272	
5673271	esferas e gaiola		GM 5673271	GM Truck C50,350,714,718,814,914 FORD Truck F350
5673272/ 5673271	rolamento de esferas de contato angular axial		GM 5673272/5673271	
C4TZ3571A	esferas e gaiola		Ford C4TZ3571A	mesma C4TZ3552A e C4TZ3553A
C4TZ3552A	anel exterior		Ford C4TZ3552A	FORD Truck P400,M450,P4500 series, B-F500,600,700series Pick-Up Parcel Delivery (Truck 1 1/2-2 1/2ton)
C4TZ3553A	anel exterior		Ford C4TZ3553A	
C4TZ3552A/ C4TZ3571A	rolamento de esferas de contato angular axial		Ford C4TZ3552A/C4TZ3571A	Dodge Truck DP600, DP800 Ford Truck P400,M450,P4500 series, B-F500,600,700series Pick-Up Parcel Delivery (Truck 1 1/2-2 1/2ton)
C4TZ3553A/ C4TZ3571A	rolamento de esferas de contato angular axial		Ford C4TZ3553A/C4TZ3571A	
C6TZ3552A/ C6TZ3571A	rolamento de esferas de contato angular axial		Ford C6TZ3552A/C6TZ3571A	Ford
C6TZ3553A/ C6TZ3571A	rolamento de esferas de contato angular axial		Ford C6TZ3553A/C6TZ3571A	Ford
M307487	rolamento de esferas de contato angular axial		Volkswagen 411.71725	Volkswagen



Code	Type	Interchange	No. Origin	Application
M44348	rolamento de esferas de contato angular axial	RE44348 INA F44348	GM 7334145	Opel K180 Dodge 1500,1800 Ford Taurus,GXL Coupe,GT,Ghia
M44349	rolamento de esferas de contato angular axial	RE44349 INA F44349 SKF 633089A	GM 7334146	Opel K180 Dodge 1500,1800 Ford Taurus,GXL Coupe,GT,Ghia Fiat UNO,Duna,Fiorino,128,Europa
10790S	rolos esféricos com gaiola		Ciark 851765 GM 179291 Ford 8N3571 IHC 1142413R91	Ciark, GM, Ford, IHC
10790Z	anel exterior		Ciark 851764 GM 179290 Ford 8N3552 IHC 112415R1	Ciark, GM, Ford, IHC
10790SZ	rolamento de rolos esféricos de axial sem anel interno		Ciark 851765+851764 GM 179291+179290 Ford 8N3571+8N3552 IHC 1142413R91, 112415R1	Ciark, GM, Ford, IHC
10983R	rolos esféricos com gaiola		Ciark EQU 853373 Hough HS 915 GM 178481 Massey-Ferguson 8332262M1	Allis-Chalmers, Chamberlain, GM, Hough, Massey-Ferguson, Michigan, Ciark
10983Z	anel exterior		Ciark EQU 853379 Hough HS 905 GM 178479 Massey-Ferguson 8332262M1	Allis-Chalmers, Chamberlain, GM, Hough, Massey-Ferguson, Michigan, Ciark
10983RZ	rolamento de rolos esféricos de axial sem anel interno		Allis-Chalmers 6575+6613 Chamberlain 10916 Hough HS915+HS05 GM 178481+178479 Massey-Ferguson 8332262M1 +1016867M1 Ciark 853373+853379	Allis-Chalmers, Chamberlain, GM, Hough, Massey-Ferguson, Michigan, Ciark
502365	rolamento de rolos esféricos de axial sem anel interno	FAG 502365	Mercedes Benz 000 981 04 06	Mercedes Benz LP321,L-1111,L-1113/1114, LPO-1113/1114,O321
509043	rolamento de rolos esféricos de axial sem anel interno	FAG 509043	Mercedes Benz 345 981 70 06	Mercedes Benz LP321,L/LO-608/708, L/LO-709,LO-812,L-912, L-1111,L-1113/1114,L-1214,L-1313/1314,LPO-1113 O321,O352



Code	Type	Interchange	No. Origin	Application
5BC	rolos cônicos e gaiola		Chrysler 640230 / 669074 / 669077 Ford 68-3571A / 799106 / B14759 GM 7317557 / 9412932 / 9412934 / 446778	GM PICK-UP A-10/20,C-10/20,D-10/20,Bonanza, Chevrolet Veraneio Volkswagen Kombi 1200 /1500 / 1600 /1600 Clipper Ford 68-3571A, 799106, B14759 Renault ,Estancieta , Jeep, etc.
5BC/6	rolos cônicos e gaiola + cone		Ford 81645 Volkswagen 211415231.2	Ford F75 4x2,F75 4x4, Jeep 4x2,Jeep 4x4,Rural 4x2, Rural 4x4 : 1960~1983 Volkswagen Kombi :1967 Chrysler D100
5BC/6CE	rolos cônicos e gaiola + cone		Ford 81646 Volkswagen 211415232.2	Ford F75 4x2,F75 4x4 Jeep 4x2,Jeep 4x4,Rural 4x2, Rural 4x4 : 1960~1983 Volkswagen Kombi :1967 Chrysler D100
11BC	rolos cônicos e gaiola		Chrysler 640086 / Y11BC / 03817 Ford 81T3571A / 691270 / 12100335 / H3571 GM 262200 / 446576 / 7362218 / 7363218 / 9412950 Renault 7700505/8521703 Toyota 90023-68001	GM Pick-up A-60/70/80/90/99,C-60/70/80/90/99,D-60/74/75/78/80/ 90/99 Ford Galaxie,Maeverick,F-100/350/400/600/4000 Volkswagen 6.80/6.390/6140/790S/ 11.130/ 11.140/11.160/13.130/ 13.140/14.140 Toyota Bandeirante (Land Cruiser)
11BC/13C	rolos cônicos e gaiola + cone		Ford 81T3571A/81T3552A Toyota 90023-68001 Toyota 45426-98001 GM 7329590	Ford Galaxie, Landau, F100, F350, F400,F600,F700,F750, F11000,F13000, F14000,F21000,F4000,F7000, F8000, F8500, FT7000,FT8000, FT8500 Toyota Bandeirante (Land Cruiser) Chrysler D400,D700,D750,D900 GM Pick-up A60,A70,A80,A90,A99 GM Pick-up C60,C70,C80,C90, C99, D60, D74,D75,D78, D80,D99 Volkswagen 11-130:HC340~HC341, 13-130: L1145, L1245, 6.80 D/S, 6.90 D/S



Code	Type	Interchange	No. Origin	Application
11BC/14XS	rolos cônicos e gaiola + cone		Ford 81T3571A/81T3553A Toyota 90023-68001 Toyota 45426-98002 GM 7329589 Ford C4TZ3123A	Ford Galaxie, Landau, F100, F350, F400, F600, F11000, F13000, F14000HD, F21000, F4000, F7000, F8000, F8500, FT7000, FT8000, FT8500 Toyota Bandeirante (Land Cruiser) Chrysler D400, D700, D750, D900, D950 GM Pick-up A60, A70, A80, A90, A99 GM Pick-up C60, C70, C80, C90, C99, D60, D74, D75, D78, D80, D99 Volkswagen 11-130:HC340~HC341 13-130:11145 11245
35BC/38A	rolos cônicos e gaiola + cone		Ford BD2T3571A/BD2T3552A	Ford F11000/13000/14000/21000, F750 GM D70/75/78/80:1964
35BC/36X	rolos cônicos e gaiola + cone		Ford BD2T3571A/BD2T3524B	Ford F11000/12000/13000/14000/19000 /21000/22000/F700/F750 GM D70/75/78/80:1964
45BC/47	rolos cônicos e gaiola + cone		Fiat 9722/55041/043 Mecedes Benz 3254620028 Scania 65903/65905	Heavy Duty Truck Fiat 180C/C3/L/N/N3:1971, FNM 210/C/CM/LN:1971~1976, FNM D11000:1958~1972. FNM V15:1969~1974 Mercedes Benz 331L/LPK/LPS:1960~1968 Scania 110B/L/LS, 75B/L/LS, 76B/L/LS,
45BC/46	rolos cônicos e gaiola + cone		Fiat 9722/55041/042 Mecedes Benz 3254620027 Scania 65903/65902	Heavy Duty Truck Fiat 180C/C3/L/N/N3:1971, FNM 210/C/CM/LN:1971~1976, FNM D11000:1958~1972. FNM V15:1969~1974 Mercedes Benz 331L/LPK/LPS:1960~1968 Scania 110B/L/LS, 75B/L/LS, 76B/L/LS,

BMW

Model	Year	Mfg. Ref #	Order No.
All BMW models	59-69	SSW055*	MST-021
All BMW models except F650	70-	SSW901*	MST-022

HONDA STREET

Model	Year	Mfg. Ref #	Order No.
MB5-50	1982	SSH200	MST-001
NSF50F	1990	SSH200	MST-001
CB100/K1/K2 Super Sport 100	70-72	SSH200	MST-001
CL100/K1/K2 Scrambler 100	70-72	SSH200	MST-001
CL100S/S2/S3 Scrambler 100S	71-73	SSH200	MST-001
CB125S/S1/S2	73-75	SSH200	MST-001
CB125S	1976	SSH200	MST-001
CB125S	78-82	SSH200	MST-001
CB125S	84-85	SSH200	MST-001
CB125TT	1990	SSH200	MST-001
MT125R/RII Roadracer	77-78	SSH200	MST-001
CM185T Twinstar	78-79	SSH200	MST-001
CM200T Twinstar	80-82	SSH200	MST-001
CB250 Nighthawk	May-91	SSH200	MST-001
CM250C Custom	82-83	SSH200	MST-001
CMX250C/CD Rebel 250	85-87	SSH200	MST-001
CMX250C	May-96	SSH200	MST-001
CMX250C2	99-00	SSH200	MST-001
VTR250 Interceptor	1988	SSH750	MST-002
VTR250 Interceptor	89-90	SSH903	MST-007
CB350F/F1 Super Sport	73-74	SSH750	MST-002
CB350G	1973	SSH750	MST-002
CB350/K1-K4 Super Sport	68-72	SSH750	MST-002
CL350/K1-K5 Scrambler	68-73	SSH750	MST-002
SL350/K1/K2 Motosport	69-73	SSH750	MST-002
CB360/G	1974	SSH750	MST-002
CB360T	75-76	SSH750	MST-002
CJ360T	76-77	SSH750	MST-002
CL360/K1 Scrambler	74-75	SSH750	MST-002
CB400AAutomatic	1978	SSH750	MST-002
CB400F Super Sport	75-77	SSH750	MST-002
CB400TI/TII Hawk	78-79	SSH750	MST-002
CB400T Hawk	80-81	SSH750	MST-002
CM400A Automatic	79-81	SSH750	MST-002

Aplicacao de Kits de Moto Rolamento Coluna de Direcção

CM400C Custom	1981	SSH750	MST-002
CM400E	80-81	SSH750	MST-002
CM400T	79-81	SSH750	MST-002
CB450 Super Sport 450	65-68	SSH750	MST-002
CB450K1-K7 Super Sport 450	68-74	SSH750	MST-002
CB450SC Nighthawk	82-83	SSH750	MST-002
CB450SC Nighthawk	85-86	SSH750	MST-002
CB450T Hawk	1982	SSH750	MST-002
CL450K1-K6 Scrambler	68-74	SSH750	MST-002
CM450A Automatic	82-83	SSH750	MST-002
CM450C Custom	1982	SSH750	MST-002
CM450E	82-83	SSH750	MST-002
CMX450C Rebel	86-87	SSH903	MST-007
CB500/K1/K2	71-73	SSH750	MST-002
CB500T	75-76	SSH750	MST-002
CX500	78-79	SSH750	MST-002
CX500C Custom	79-82	SSH750	MST-002
CX500D	79-81	SSH750	MST-002
CX500TC Turbo	1982	SSH903	MST-007
FT500 Ascot	82-83	SSH750	MST-002
GB500	89-90	SSH750	MST-002
GL500 Silverwing	81-82	SSH750	MST-002
GL500I Silverwing Interstate	81-82	SSH750	MST-002
VF500C Magna	84-85	SSH903R	MST-007
VF500F Interceptor	84-86	SSH903R	MST-007
VT500C Shadow	83-84	SSH750	MST-002
VT500C Shadow	85-86	SSH903R	MST-007
VT500FT Ascot	83-84	SSH750	MST-002
CB550F Super Sport	75-77	SSH750	MST-002
CB550/K1	74-75	SSH750	MST-002
CB550K	76-78	SSH750	MST-002
CB550SC Nighthawk	1983	SSH750	MST-002
CBR600F Hurricane	87-90	SSH903R	MST-007
CBR600F2 Hurricane	91-94	SSH903R	MST-007
CBR600F3 Hurricane	95-98	SSH903R	MST-007
CBR600SE Hurricane	1998	SSH903R	MST-007
CBR600RR	2003~2005	SSH903R	MST-007
CBR600SJR	1996	SSH903R	MST-007
CBR600F4 Hurricane	1999~2001	SSH903R	MST-007
VT600C Shadow VLX	88-89	SSH903	MST-007
VT600C Shadow VLX	91-97	SSH903	MST-007
VT600C Shadow	1999~2005	SSH903	MST-007

Aplicacao de Kits de Moto Rolamento Coluna de Direcção

VT600CD Shadow VLX Deluxe	93-98	SSH903	MST-007
VT600CD Shadow Deluxe	1999~2005	SSH903	MST-007
VT600CD2 Shadow Deluxe	1999-2000	SSH903	MST-007
CB650	79-82	SSH750	MST-002
CB650C Custom	80-81	SSH750	MST-002
CB650SC Nighthawk	82-85	SSH750	MST-002
CX650C	1983	SSH750	MST-002
CX650T Turbo	1983	SSH903	MST-007
GL650 Silverwing	1983	SSH750	MST-002
GL650I Silverwing Interstate	1983	SSH750	MST-002
NT650 Hawk GT	88-91	SSH903R	MST-007
CB700SC Nighthawk	84-86	SSH903	MST-007
VF700C Magna	84-87	SSH903	MST-007
VF700F Interceptor	84-85	SSH903R	MST-007
VFR700F Interceptor	1986	SSH903R	MST-007
VFR700F2 Interceptor	86-87	SSH903R	MST-007
VF700S Sabre	84-85	SSH903R	MST-007
VT700C Shadow	84-85	SSH750	MST-002
VT700C Shadow	86-87	SSH903	MST-007
CB750 Nighthawk	91-93	SSH903	MST-007
CB750 Nighthawk	1995~2003	SSH903	MST-007

HONDA STREET (cont'd)

Model	Year	Mfg. Ref #	Order No.
CB750A Automatic	76-78	SSH750	MST-002
CB750C Custom	80-82	SSH903	MST-007
CB750F Super Sport	75-78	SSH750	MST-002
CB750F Super Sport	80-82	SSH903	MST-007
CB750K	69-70	SSH750	MST-002
CB750K	71-78	SSH750	MST-002
CB750K	80-82	SSH903	MST-007
CB750SC Nighthawk	82-83	SSH903	MST-007
VF750C Magna	82-83	SSH903	MST-007
VF750C Magna	1988	SSH903	MST-007
VF750C Magna	1994~2003	SSH903	MST-007
VF750CD Magna	95-96	SSH903	MST-007
VF750C2 Magna Deluxe	1997~2001	SSH903	MST-007
VF750F Interceptor	83-84	SSH903	MST-007
VF750S Sabre	82-83	SSH903	MST-007
VFR750F Interceptor	1986	SSH903R	MST-007
VFR750F	90-97	SSH903R	MST-007
VT750C Shadow	1983	SSH750	MST-002

Aplicacao de Kits de Moto Rolamento Coluna de Direcção

VT750C Shadow	98-00	SSH903	MST-007
VT750C	2004~2005	SSH903	MST-007
VT750CA	2004~2005	SSH903	MST-007
VT750CD Shadow	1998~2001	SSH903	MST-007
VT750CD2 Shadow	1998~2001	SSH903	MST-007
VT750CDA	2002~2003	SSH903	MST-007
VT750CDB	2002~2003	SSH903	MST-007
VT750CDC	2002~2003	SSH903	MST-007
VT750CDD	2002~2003	SSH903	MST-007
VT750DC Shadow	2001~2002	SSH903	MST-007
VT750DCA	2003	SSH903	MST-007
VT750DCB	2003	SSH903	MST-007
PC800 Pacific Coast	89-90	SSH903	MST-007
PC800 Pacific Coast	94-98	SSH903	MST-007
VFR800 Interceptor	2002~2005	SSH903R	MST-007
VFR800A Interceptor ABS	2002~2005	SSH903R	MST-007
VFR800FI Interceptor	1998~2001	SSH903R	MST-007
VT800C Shadow	1988	SSH903R	MST-007
CB900C Custom	80-82	SSH903	MST-007
CB900F Super Sport	81-82	SSH903	MST-007
CB900F 919	2002~2005	SSH903R	MST-007
CBR900RR	93-99	SSH903R	MST-007
CBR929RR	00-01	SSH903R	MST-007
CBR954RR	2002~2003	SSH903R	MST-007
CB1000	94-95	SSH903	MST-007
CB1000C Custom	1983	SSH903	MST-007
CBR1000F Hurricane	87-88	SSH903	MST-007
CBR1000F Hurricane	90-91	SSH903B	MST-007
CBR1000F Hurricane	93-96	SSH903	MST-007
CBX1000	80-82	SSH903	MST-007
GL1000 Goldwing	75-76	SSH750	MST-002
GL1000L LTD	1976	SSH750	MST-002
VF1000F Interceptor	1984	SSH903	MST-007
VF1000R	85-86	SSH903	MST-007
VTR1000F Super Hawk	1998~2005	SSH903R	MST-007
CB1100F Super Sport	1983	SSH903	MST-007
CBR1100XX Blackbird	1997~2003	SSH903R	MST-007
GL1100 Goldwing	80-83	SSH903	MST-007
GL1100A Goldwing Aspencade	82-83	SSH903	MST-007
GL1100I Goldwing Interstate	80-83	SSH903	MST-007
ST1100	1991~2002	SSH903R	MST-007
ST1100A (ABS)	1992~2002	SSH903R	MST-007

Aplicacao de Kits de Moto Rolamento Coluna de Direcção

VF1100C Magna	83-86	SSH903R	MST-007
VF1100S Sabre	84-85	SSH903R	MST-007
VT1100C Shadow 1100	85-86	SSH903	MST-007
VT1100C Shadow 1100	87-90	SSH903	MST-007
VT1100C Shadow 1100	92-96	SSH903	MST-007
VT1100C Shadow 1100 Spirit	1997~2001	SSH903	MST-007
VT1100C2 Shadow ACE	95-99	SSH903	MST-007
VT1100C2 Shadow Sabre	2000	SSH903	MST-007
VT1100C2-2 ACE	1997	SSH903	MST-007
VT1100C3 Shadow Aero	98-00	SSH903	MST-007
VT1100D2 ACE	1999	SSH903	MST-007
VT1100T ACE Tourer	98-00	SSH903	MST-007
GL1200 Goldwing	1984	SSH903	MST-007
GL1200A Goldwing Aspencade	84-87	SSH903	MST-007
GL1200I Goldwing Interstate	84-87	SSH903	MST-007
GL1200L Goldwing LTD	1985	SSH903	MST-007
GL1200SEi	1986	SSH903	MST-007
ST1300	2003~2005	SSH903R	MST-007
ST1300A	2003~2005	SSH903R	MST-007
VTX1300C	2003~2005	SSH903R	MST-007
VTX1300R	2003~2005	SSH903R	MST-007
VTX1300S	2003~2005	SSH903R	MST-007
GL1500 Goldwing	88-90	SSH903	MST-007
GL1500A Goldwing Aspencade	91-00	SSH903	MST-007
GL1500I Goldwing Interstate	91-96	SSH903	MST-007
GL1500SE Goldwing SE	90-00	SSH903	MST-007
GL1500C Valkyrie	97-00	SSH903	MST-007
GL1500C	2003	SSH903	MST-007
GL1500CD	2001~2003	SSH903	MST-007
GL1500CF Valkyrie Interstate	1999~2001	SSH903	MST-007
GL1500CT Valkyrie Tourer	1997-2000	SSH903	MST-007
VTX1800C	2002~2004	SSH903	MST-007
VTX1800R	2002~2004	SSH903	MST-007
VTX1800S	2002~2004	SSH903	MST-007

HONDA ATV

Model	Year	Mfg. Ref #	Order No.
ATC70/K1	73-74	SSH200	MST-001
ATC70	78-85	SSH200	MST-001
ATC90/K1/K2/K3	70-75	SSH200	MST-001
ATC90	76-78	SSH200	MST-001
ATC110	79-85	SSH200	MST-001

Aplicacao de Kits de Moto Rolamento Coluna de Direcção

ATC125M	84-87	SSH200	MST-001
ATC185	1980	SSH200	MST-001
ATC185S	81-83	SSH200	MST-001
ATC200	81-83	SSH200	MST-001
ATC200E Big Red	82-83	SSH200	MST-001
ATC200ES Big Red	1984	SSH200	MST-001
ATC200S	84-85	SSH200	MST-001
ATC250R	83-86	SSH902	MST-005

HONDA DUAL SPORT & OFFROAD

Model	Year	Mfg. Ref #	Order No.
CRF50R	2004~2006	SSH200	MST-001
MR50/K1 Elsinore	74-75	SSH200	MST-001
XR50R	2000~2003	SSH200	MST-001
Z50AK3/AK4/AK5	72-75	SSH200	MST-001
Z50A Mini Trail 50	76-78	SSH200	MST-001
Z50R	79-87	SSH200	MST-001
Z50RD Special	1986	SSH200	MST-001
CR60R	1983	SSH200	MST-001
CRF70	2004~2006	SSH200	MST-001
CL70/K1/K2/K3 Scrambler	69-73	SSH200	MST-001
CT70 Trail 70	69-71	SSH200	MST-001
CT70H/HK1 Trail 70H	70-73	SSH200	MST-001
CT70K1/K2/K3/K4 Trail 70	72-75	SSH200	MST-001
CT70 Trail 70	76-82	SSH200	MST-001
SL70/K1	71-73	SSH200	MST-001
XL70	74-76	SSH200	MST-001
XL75	77-79	SSH200	MST-001
XR75/K1/K2	73-75	SSH200	MST-001
XR75	76-78	SSH200	MST-001
CR80R	80-81	SSH200	MST-001
CR80R	87-91	SSH902	MST-005
CRF80	2004~2006	SSH200	MST-001
XL80S	80-85	SSH200	MST-001
XR80	79-84	SSH200	MST-001
XR80R	1985~2003	SSH200	MST-001
CT90 Trail 90	66-68	SSH200	MST-001
CT90K1-K6 Trail 90	69-75	SSH200	MST-001
CT90 Trail 90	76-79	SSH200	MST-001
SL90 Motosport	1969	SSH200	MST-001
SL100/K1/K2/K3 Motosport	70-73	SSH200	MST-001
CRF100R	2004~2006	SSH200	MST-001

Aplicacao de Kits de Moto Rolamento Coluna de Direcção

XL100/K1	74-75	SSH200	MST-001
XL100	76-78	SSH200	MST-001
XL100S	79-85	SSH200	MST-001
XR100	81-84	SSH200	MST-001
XR100R	1983~2003	SSH200	MST-001
CT110 Trail 110	80-84	SSH200	MST-001
CT110 Trail 110	1986	SSH200	MST-001
CR125M/M1 Elsinore	74-78	SSH200	MST-001
CR125R	82-83	SSH902	MST-005
CR125R	84-89	SSH902R	MST-005
CR125R	90-92	SSH904	MST-008
CR125R	93-94	SSH905	MST-009
CR125R	95-97	SSH907	MST-010
CR125R	1998~2006	SSH905	MST-009
CT125 Trail 125	1977	SSH200	MST-001
MT125K Elsinore	74-76	SSH200	MST-001

HONDA DUAL SPORT & OFFROAD (cont'd)

Model	Year	Mfg. Ref #	Order No.
NX125	88-90	SSH902	MST-005
SL125/K1/K2 Motosport	71-73	SSH200	MST-001
TL125/K1/K2/S Trials	73-76	SSH200	MST-001
XL125/K1	74-75	SSH200	MST-001
XL125S	76-82	SSH200	MST-001
XL125S	84-85	SSH200	MST-001
MR175K Elsinore	75-77	SSH200	MST-001
XL185S	79-83	SSH200*	MST-001
XR185	1979	SSH200*	MST-001
XL200R Dual Sport	83-84	SSH902	MST-005
XR200 (2 shock)	80-84	SSH200*	MST-001
XR200R Prolink	81-83	SSH902	MST-005
XR200R Prolink	84-87	SSH902	MST-005
XR200R	1988	SSH902R	MST-005
XR200R	90-91	SSH902R	MST-005
XR200R	1993~2003	SSH902R	MST-005
CR250R	81-83	SSH902	MST-005
CR250R	84-89	SSH902R	MST-005
CR250R	90-91	SSH904	MST-008
CR250R	92-94	SSH905	MST-009
CR250R	95-96	SSH907	MST-010
CR250R	1997~2005	SSH905	MST-009
NX250	88-90	SSH902R	MST-005

Aplicacao de Kits de Moto Rolamento Coluna de Direcção

XL250R	82-87	SSH902R	MST-005
XR250L	91-96	SSH902R	MST-005
XR250R	81-82	SSH902	MST-005
XR250R	84-87	SSH902R	MST-005
XR250R	88-91	SSH902	MST-005
XR250R	1992~2003	SSH902R	MST-005
XL350R	84-85	SSH902	MST-005
XR350R	83-85	SSH902	MST-005
XR400R	1997~2004	SSH902	MST-005
CR450R	1981	SSH902	MST-005
CRF450R	2002~2006	SSH905	MST-009
CRF450X	2004~2006	SSH905	MST-009
CR480R	82-83	SSH902	MST-005
CR500R	84-89	SSH902R	MST-005
CR500R	1990~2001	SSH904	MST-008
XL500R	1982	SSH902	MST-005
XR500R	81-84	SSH902	MST-005
XL600R	83-87	SSH902	MST-005
XL600V Transalp	89-90	SSH902	MST-005
XR600R	85-87	SSH902	MST-005
XR600R	88-00	SSH902R	MST-005
NX650	88-89	SSH902R	MST-005
XR650L	1993~2006	SSH902R	MST-005
XR650R	2001~2006	SSH902R	MST-005

KAWASAKI STREET

Model	Year	Mfg. Ref #	Order No.
EL250B2/B3 Eliminator	88-89	SSK400	MST-018
EL250E1/E2/E3 250HS Eliminator	91-93	SSK400	MST-018
EX250E1/E2 Ninja 250R	86-87	SSK400	MST-018
EX250F6-F19 Ninja 250R	1992-2005	SSK400	MST-018
EX250F6F Ninja 250R	2006	SSK400	MST-018
S1A/B/C-250 (2-stroke triple)	73-75	SSK100	MST-017
KH250A5 (2-stroke triple)	1976	SSK100	MST-017
EX305B1 GPz	1983	SSK100	MST-017
KZ305A1/A2 CSR	81-82	SSK100	MST-017
KZ305B1 CSR Belt	1982	SSK100	MST-017
KZ305B2/B3 LTD Belt	87-88	SSK100	MST-017
S2/S2A 350 (2-stroke triple)	72-73	SSK100	MST-017
S3/S3A-400 (2-stroke triple)	74-75	SSK100	MST-017
KH400A3/A4/A5 (2-stroke triple)	76-78	SSK100	MST-017
KZ400A1/A2 Deluxe	77-78	SSK100	MST-017

Aplicacao de Kits de Moto Rolamento Coluna de Direcção

KZ400B1/B2	78-79	SSK100	MST-017
KZ400C1	1978	SSK100	MST-017
KZ400/D/D3/D4	74-77	SSK100	MST-017
KZ400H1 LTD	1979	SSK100	MST-017
KZ400S/S2/S3 Special	75-77	SSK100	MST-017
KZ440A1/A2/A3/A4 LTD	80-83	SSK100	MST-017
KZ440B1/B2	80-81	SSK100	MST-017
KZ440D1-D5 LTD Belt	80-83	SSK100	MST-017
KZ440G1 Belt	1982	SSK100	MST-017
EN450A1-A6 LTD 454	85-90	SSK902	MST-019
H1C/D/E/F-500 (2-stroke triple)	72-75	SSK100	MST-017
KH500A8 2-stroke triple	1976	SSK100	MST-017
EN500A1-A6 Vulcan 500	90-96	SSK902	MST-019
EN500C1-C10 Vulcan 500 LTD	1996-2005	SSK902	MST-019
EN500C6F Vulcan 500 LTD	2006	SSK902	MST-019
EX500A1-A7	87-93	SSK400	MST-018
EX500D1/D2/D3 Ninja 500	94-96	SSK400	MST-018
EX500D4-D12 Ninja 500R	1997-2005	SSK400	MST-018
EX500D6F Ninja 500R	2006	SSK400	MST-018
KZ550A1/A2/A3/A4	80-83	SSK400	MST-018
KZ550C1/C2/C3/C4 LTD	80-83	SSK400	MST-018
KZ550D1 GPz	1981	SSK400	MST-018
KZ550H1/H2 GPz	82-83	SSK902	MST-019
KZ550F1/F2 Spectre & LTD	83-84	SSK902	MST-019
KZ550M1 LTD	1983	SSK902	MST-019
ZR550B1/B2/B3/B4 Zephyr	90-93	SSK902	MST-019
ZX550A1/A2 GPz	84-85	SSK902	MST-019
ZX600A1/A2/A3 Ninja 600R	85-87	SSK902	MST-019
ZX600B1 Ninja 600RX	1987	SSK902	MST-019
ZX600C1-C10 Ninja 600R	88-97	SSK902	MST-019
ZX600D1/D2/D3/D4 Ninja ZX-6	90-93	SSK902	MST-019
ZX600E1-E10 Ninja ZX-6	1993-2002	SSK902	MST-019
ZX600F1/F2/F3 Ninja ZX-6R	95-97	SSK902	MST-019
EJ650A2/A3 W650	00-01	SSK902	MST-019
KZ650B1/B2/B2A/B3	77-79	SSK400	MST-018
KZ650C1/C2/C3 Custom	77-79	SSK400	MST-018
KZ650D1/D1A/D2 SR	78-79	SSK400	MST-018
KZ650E1/F1	1980	SSK400	MST-018
KZ650H1/H2/H3 CSR	81-83	SSK400	MST-018
KZ700A1	1984	SSK902	MST-019
ZN700A1/A2 LTD	84-85	SSK902	MST-019
H2/A/B/C-750 triple	72-75	SSK100	MST-017

Aplicacao de Kits de Moto Rolamento Coluna de Direcção

KZ750B1/B2 (2-cylinder)	76-77	SSK400	MST-018
KZ750B3/B4 (2-cylinder)	78-79	SSK400	MST-018
KZ750E1/E2/E3	80-82	SSK400	MST-018
KZ750F1 LTD	1983	SSK902	MST-019
KZ750G1 LTD (2-cylinder)	1980	SSK400	MST-018
KZ750H1/H2/H3/H4 LTD	80-83	SSK400	MST-018
KZ750K1/K2 LTD (2-cylinder)	83-84	SSK400	MST-018

KAWASAKI STREET (cont'd)

Model	Year	Mfg. Ref #	Order No.
KZ750L3	1983	SSK902	MST-019
KZ750M1 CSR (2-cylinder)	1982	SSK400	MST-018
KZ750N1/N2 Spectre	82-83	SSK902	MST-019
KZ750R1 GPz	1982	SSK902	MST-019
ZR750C1/C2/C3 Zephyr	91-93	SSK902	MST-019
ZR750F2 ZR-7	2000	SSK902	MST-019
ZX750A1/A2/A3 GPz	83-85	SSK902	MST-019
ZX750E1/E2 GPz Turbo	84-85	SSK902	MST-019
ZX750F1/F2/F3/F4 Ninja 750R	87-90	SSK902	MST-019
ZX750H1/H2 Ninja ZX-7	89-90	SSK902	MST-019
ZX750J1/J2 Ninja ZX-7	91-92	SSK907	MST-020
ZX750K1/K2 Ninja ZX-7R	91-92	SSK907	MST-020
ZX750L1/L2/L3 Ninja ZX-7	93-95	SSK907	MST-020
ZX750M1/M2 Ninja ZX-7R	93-94	SSK907	MST-020
ZX750N1/N2 Ninja ZX-7RR	96-97	SSK907	MST-020
ZX750P1-P6 ZX-7R	1996-2001	SSK907	MST-020
VN800A1-A7 Vulcan 800	1995-2001	SSK902	MST-019
VN800B1-B6 Vulcan 800 Classic	1996-2001	SSK902	MST-019
VN800C1/C2/E1 Vulcan 800 Drifter	1996-2001	SSK902	MST-019
Z1/A/B-900	73-75	SSK400	MST-018
KZ900A4/A5	76-77	SSK400	MST-018
KZ900B1 LTD	1976	SSK400	MST-018
ZL900A1/A2 Eliminator	85-86	SSK902	MST-019
ZX900A1/A2/A3 Ninja 900R	84-86	SSK902	MST-019
ZX900B1/B2/B3/B4 Ninja ZX-9R	94-97	SSK907	MST-020
ZX900C1/C2 Ninja ZX-9R	98-99	SSK907	MST-020
KZ1000A1/A2/A2A	77-78	SSK400	MST-018
KZ1000A3/A3A/A4 MKII	79-80	SSK400	MST-018
KZ1000B1/B2/B3/B4 LTD	77-80	SSK400	MST-018
KZ1000C1/C1A/C2/C3/C4 Police	78-81	SSK400	MST-018
KZ1000D1 Z1R	1978	SSK400	MST-018
KZ1000D3 Z1R	1980	SSK400	MST-018

Aplicacao de Kits de Moto Rolamento Coluna de Direcção

KZ1000G1 LTD Classic	1980	SSK400	MST-018
KZ1000J1/J2/J3	81-83	SSK902	MST-019
KZ1000K1/K2 LTD	81-82	SSK902	MST-019
KZ1000M1/M2 CSR	81-82	SSK902	MST-019
KZ1000P1-P21 Police	1982-2002	SSK902	MST-019
KZ1000R1/R2 Replica	82-83	SSK902	MST-019
ZG1000A1-A16 Concours	1986-2001	SSK902	MST-019
ZL1000A1 Eliminator	1987	SSK902	MST-019
ZX1000A1/A2 Ninja 1000R	86-87	SSK902	MST-019
ZX1000B1/B2/B3 Ninja ZX-10	88-90	SSK902	MST-019
KZ1100A1/A2/A3 Shaft	81-83	SSK902	MST-019
KZ1100B1/B2 GPz	81-82	SSK902	MST-019
KZ1100D1/D2 Spectre	82-83	SSK902	MST-019
KZ1100L1 LTD	1983	SSK902	MST-019
ZN1100B1/B2 LTD Shaft	84-85	SSK902	MST-019
ZR1100A1-A4	92-95	SSK902	MST-019
ZR1100C3/C4 ZRX1100	99-00	SSK902	MST-019
ZX1100A1/A2 GPz	83-84	SSK902	MST-019
ZX1100D1-D9 Ninja ZX-11	1993-2001	SSK907	MST-020
ZG1200A1 Voyager XII	1986	SSH901	MST-003
ZG1200B1-B15 Voyager XII	1987-2001	SSH901	MST-003
VN1500A1-A9 Vulcan 88	87-95	SSK902	MST-019
VN1500A10-A12 Vulcan 1500	96-98	SSK902	MST-019
VN1500B1/B2/B3/B4 Vulcan 88 SE	87-90	SSK902	MST-019
VN1500C3/C4 Vulcan 1500L	96-97	SSK902	MST-019
VN1500D1/D2 Vulcan Classic	96-97	SSK902	MST-019
VN1500E1-E4 Vulcan Classic	1998-2001	SSK902	MST-019
VN1500G1/G1A/G2A/G3 Nomad	1999-2001	SSK907	MST-020
VN1500J1/J2/R1 Vulcan Drifter	1999-2001	SSK907	MST-020
VN1500L1/L2 Vulcan Nomad F.I.	2000-2001	SSK907	MST-020
VN1500N1/N2 Vulcan Classic F.I.	2000-2001	SSK907	MST-020

KAWASAKI ATV

Model	Year	Mfg. Ref #	Order No.
KXT250A1/A2/B1/B2 Tecate 3	84-87	SSH901	MST-003

KAWASAKI DUAL SPORT & OFFROAD

Model	Year	Mfg. Ref #	Order No.
KX125B1/B2/C1/D1/E1/E2	82-87	SSH901	MST-003
KX125F1/G1/H1/H2	88-91	SSH901	MST-003
KDX200A1/A2/A3/C1/C2/C3	83-88	SSH901	MST-003
KDX200E1/E2/E3/E4/E5/E6	89-94	SSH901	MST-003

Aplicacao de Kits de Moto Rolamento Coluna de Direcção

KDX200H1-H10	1995-2004	SSH901	MST-003
KDX220A4-A11	1997-2004	SSH901	MST-003
KDX250A1/B1/B2/B3/B4	80-84	SSH901	MST-003
KL250D2-D22 KLR250	1985-2005	SSK902	MST-019
KL250G4/G5/G6/G7 Super Sherpa	00-03	SSK902	MST-019
KLX250D2/D3/D4	94-96	SSH901	MST-003
KX250B1/C1/C2	82-84	SSH901	MST-003
KX250D1/D2/E1/F1/G1/H1/H2	85-91	SSH901	MST-003
KLX300A2-A10 KLX300R	1997-2005	SSK902	MST-019
KLX300A6F	2006	SSK902	MST-019
KDX420B1	1981	SSH901	MST-003
KX420A1/A2	80-81	SSH901	MST-003
KDX450A1	1982	SSH901	MST-003
KX500A1/A2/B1/B2/C1/D1	83-88	SSH901	MST-003
KX500E1-E16	1989-2004	SSH901	MST-003
KL600A1/B1/B2 KLR600	84-86	SSK902	MST-019
KL650A1-A19 KLR650	1987-2005	SSK902	MST-019
KL650A6F KLR650	2006	SSK902	MST-019
KL650B2 Tengai KLR650	1990	SSK902	MST-019
KLX650A1/A2/A3 Offroad	93-95	SSH901	MST-003
KLX650C1/C2/C3/C4 Dual Sport	93-96	SSH901	MST-003
KLX650D1 Offroad	1996	SSH901	MST-003

SUZUKI STREET

Model	Year	Mfg. Ref #	Order No.
GN250Z/D/F	82-85	SSH901	MST-003
GN250J	1988	SSH901	MST-003
GS250TT/TX	80-81	SSS250	MST-014
GT250A/B Hustler	76-77	SSS250	MST-014
GS300LZ/LD	82-83	SSS250	MST-014
GS300LF	1985	SSS250	MST-014
GT380K/L/M/A/B Sebring	73-77	SSS250	MST-014
GN400T/XT/XX/TX/TZ	80-82	SSH901	MST-003
GS400B/XB/C/XC	77-78	SSS250	MST-014
GSF400M/N/P Bandit	91-93	SSH901	MST-003
GS425N/EN/LN	1979	SSS250	MST-014
GS450ET/EX/EZ/ED	80-83	SSH901	MST-003
GS450GAZ/GAD Automatic	82-83	SSH901	MST-003
GS450GAF Automatic	1985	SSH901	MST-003
GS450LT/LX/LZ/LD	80-83	SSH901	MST-003
GS450LF/LG/LH/LJ	85-88	SSH901	MST-003
GS450ST/SX	80-81	SSH901	MST-003

Aplicacao de Kits de Moto Rolamento Coluna de Direcção

GS450TX/TZ	81-82	SSH901	MST-003
GS450TXZ/TXD	82-83	SSH901	MST-003
GS500EK-K2	1989-2002	SSH901	MST-003
GT500A/B Titan	76-77	SSS250	MST-014
RE-5M/ARotary	75-76	SSS250	MST-014
GS550B/C/EC/N/EN	77-79	SSS250	MST-014
GS550ET	1980	SSH901	MST-003
GS550ED/ESD	1983	SSH901	MST-003
GS550ES3/ESE/EF/ESF/ESG	83-86	SSH901	MST-003
GS550LN	1979	SSS250	MST-014
GS550LT/LX/LZ/LD	80-83	SSH901	MST-003
GS550LF/LG	85-86	SSH901	MST-003
GS550MZ Katana	1982	SSH901	MST-003
GS550TX	1981	SSH901	MST-003
GT550J/K/L/M/A/B Indy	72-77	SSS250	MST-014
GSF600ST-SK3 Bandit	1996-2003	SSH901	MST-003
GSX600FJ-K2 Katana	1988-2002	SSH901	MST-003
GSX-R600WN/WP	92-93	SSH901	MST-003
GSX-R600V-K5	1997-2005	SSS903	MST-016
RF600RR/RS/RT	94-96	SSH901	MST-003
GR650D/XD Tempter	1983	SSH901	MST-003
GS650EX/EZ	81-82	SSH901	MST-003
GS650GX/GZ/GD	81-83	SSH901	MST-003
GS650GLX/GLZ/GLD	81-83	SSH901	MST-003
GS650MDKatana	1983	SSH901	MST-003
LS650PS-PK4 Savage	1995-2004	SSH901	MST-003
SV650X/Y/K1/K2/K3/K4/K5	1999-2005	SSH901	MST-003
SV650SX-SK5	1999-2005	SSH901	MST-003
XN85D Turbo	1983	SSH901	MST-003
GS700EF/ESF	1985	SSH901	MST-003
GV700GLF/GLF2 Madura	1985	SSH901	MST-003
VS700G Intruder	86-87	SSH901	MST-003

SUZUKI STREET (cont'd)

Model	Year	Mfg. Ref #	Order No.
GS750B/C/EC/N/EN	77-79	SSS250	MST-014
GS750ET/EX/EZ	80-82	SSH901	MST-003
GS750ED/ESD	1983	SSH901	MST-003
GS750LN	1979	SSS250	MST-014
GS750LT/LX	80-81	SSH901	MST-003
GS750TZ/TD	82-83	SSH901	MST-003
GS750SD Katana	1983	SSH901	MST-003

Aplicacao de Kits de Moto Rolamento Coluna de Direcção

GSX750FK-FK5 Katana	1989-2005	SSH901	MST-003
GSX-R750RG	1986	SSH901	MST-003
GSX-R75G/H/J/K/L/M/N	86-92	SSH901	MST-003
GSX-R750WP/WR/WS	93-95	SSH901	MST-003
GSX-R750T/V/W/X/Y	96-00	SSS903	MST-016
GSX-R750K1/K2/K3/K4/K5	2001-2005	SSS903	MST-016
GT750J/K/L/M/A/B Lemans	72-77	SSS250	MST-014
VS750GLPJ-GLPM Intruder	88-91	SSH901	MST-003
VS800GLPN-GLPK4 Intruder	1992-2004	SSH901	MST-003
VX800L/M/N/P	90-93	SSH901	MST-003
VZ800V-K4 Marauder	1997-2004	SSH901	MST-003
GS850GN/GT/GX/GZ/GD	79-83	SSH901	MST-003
GS850GLT/GLX/GLZ/GLD	80-83	SSH901	MST-003
RF900RR/RS/RT/RV	94-97	SSH901	MST-003
DL1000K2-K5 V-Storm	2002-2005	SSS903R	爪爪爪
GS1000C/EC/N/EN	78-79	SSH901	MST-003
GS1000ET	1980	SSH901	MST-003
GS1000GT/GLT/GX/GLX	80-81	SSH901	MST-003
GS1000LN	1979	SSH901	MST-003
GS1000SN/ST	79-80	SSH901	MST-003
GS1000SZ Katana	1982	SSH901	MST-003
GSX-R1000K1/K2/K3/K4/K5	2001-2005	SSS903	MST-016
TL1000SV-SK1	1997-2001	SSS903	MST-016
TL1000RW-RK3	1998-2003	SSS903R	爪爪爪
GS1100ET/EX/EZ/ED/ESD	80-83	SSH901	MST-003
GS1100GZ/GLZ/GD/GLD	82-83	SSH901	MST-003
GS1100LT	1980	SSH901	MST-003
GS1100SD Katana	1983	SSH901	MST-003
GSX1100FJ-FP Katana	88-93	SSH901	MST-003
GSX1100GM/GN/GP Shaft	91-93	SSH901	MST-003
GSX-R1100G/H/J/K/L/M/N	86-92	SSH901	MST-003
GSX-R1100WP-WW	93-98	SSH901	MST-003
GS1150ES3/ESE/EF/ESF/EG	83-86	SSH901	MST-003
GSF1200SV-SK5 Bandit	1997-2005	SSH901	MST-003
GSF1200SAV Bandit	1997	SSH901	MST-003
GV1200GLF/GLF2/GLG Madura	85-86	SSH901	MST-003
GV1400GCG/GCH Cavalcade LXE	86-87	SSH901	MST-003
GV1400GDG-GDJ Cavalcade LX	86-88	SSH901	MST-003
GV1400GTG/GTH Cavalcade	86-87	SSH901	MST-003
VS1400GLPH-GLPK2 Intruder	1987-2002	SSH901	MST-003
VL1500W/X/Y/K1/K2/K3 Intruder	1998-2003	SSH901	MST-003

Aplicacao de Kits de Moto Rolamento Coluna de Direcção

SUZUKI DUAL SPORT & OFFROAD

Model	Year	Mfg. Ref #	Order No.
RM100N/T/X	79-81	SSY125	MST-012
DR125SER/SES/SET Dual Sport	94-96	SSH901	MST-003
RM125/A/B/C	75-78	SSS250	MST-014
RM125N/T	79-80	SSY125	MST-012
RM125J	1988	SSH901	MST-003
PE175C/N	78-79	SSS250	MST-014
PE175T/X	80-81	SSH901	MST-003
PE175Z/D/E	82-84	SSH901	MST-003
RS175T/X/Z	80-82	SSH901	MST-003
DR200SET-SEK5 Dual Sport	1996-2005	SSH901	MST-003
DR250L/M/N/P Offroad	90-93	SSH901	MST-003
DR250SL-SES Dual Sport	90-95	SSH901	MST-003
PE250C/N	78-79	SSS250	MST-014
PE250T/X	80-81	SSH901	MST-003
RM250A/B/C/C2	76-78	SSS250	MST-014
RM250N/T	79-80	SSY125	MST-012
RM250J	1988	SSH901	MST-003
RS250T/X	80-81	SSH901	MST-003
SP250Z/D	82-83	SSS902	MST-015
SP250F	1985	SSS902	MST-015
TM250J/K/L/M	72-75	SSS250	MST-014
TS250R/J/K/L/M/A/B/C/N	71-79	SSS250	MST-014
DR350L-X Offroad	90-99	SSH901	MST-003
DR350SL-SEX Dual Sport	90-99	SSH901	MST-003
RM370A/B	76-77	SSS250	MST-014
SP370C/N Dual Sport	78-79	SSS250	MST-014
DR400T	1980	SSH901	MST-003
PE400T/X	80-81	SSH901	MST-003
RM400C	1978	SSS250	MST-014
RM400N/T	79-80	SSY125	MST-012
SP400T Dual Sport	1980	SSS250	MST-014
TM400	73-75	SSS250	MST-014
TS400	73-77	SSS250	MST-014
DR500X/Z/D	81-83	SSH901	MST-003
RM500D/E	83-84	SSS902	MST-015
SP500X/Z/D Dual Sport	81-83	SSH901	MST-003
DR650SN/SP/SER/SES Dual Sport	92-95	SSH901	MST-003

YAMAHA STREET

Model	Year	Mfg. Ref #	Order No.
--------------	-------------	-------------------	------------------

Aplicacao de Kits de Moto Rolamento Coluna de Direcção

RX50K	1983	SSY080	MST-011
RX50MK Midnight Special	1983	SSY080	MST-011
YSR50T/U/W/A/B/D	87-92	SSY080	MST-011
RD60/A/B	73-75	SSY080	MST-011
L5T/L5TA 100	69-70	SSY125	MST-012
RD125B/C	75-76	SSY125	MST-012
TA125	-	SSY125	MST-012
TD2/TD2B/TR2/TR2B-125	70-71	SSY125	MST-012
TZ125G	1980	SSY125	MST-012
SR185H/J Exciter	81-82	SSY080	MST-011
RD200A/B/C	74-76	SSY125	MST-012
RD250/A/B	73-75	SSY125	MST-012
SR250G/H/J Exciter	80-82	SSY125	MST-012
SR250TH Exciter II	1981	SSY125	MST-012
SRX250T/TC	1987	SSY125	MST-012
TD3/TR3 250 (Race)	1972	SSY125	MST-012
TZ250 (Race)	1973	SSY125	MST-012
TZ250C/D/E (Race)	76-78	SSY125	MST-012
TZ250F/G/H/J (Race)	79-82	SSH901	MST-003
XV250U/UC/W/WC Route 66	88-89	SSY125	MST-012
XV250A/AC Route 66	1990	SSY125	MST-012
XV250G/GC-L/LC Route 66	95-99	SSY125	MST-012
XV250M/MC-T/TC Virago 250	00-05	SSY125	MST-012
R5/B/C 350	70-72	SSY125	MST-012
RD350/A/B	73-75	SSY125	MST-012
RZ350L/N/NC/NCII	84-85	SSY125	MST-012
TZ350/C/D/E	74-78	SSY125	MST-012
XS360C/D/2D	76-77	SSY125	MST-012
FZR400U/SUC/W/SWC/A/SAC	88-90	SSH901	MST-003
RD400C/D/E/F	76-79	SSY125	MST-012
XS400D/E/F	77-79	SSY125	MST-012
XS400E/2F	78-79	SSY125	MST-012
XS400G/H Special II	80-81	SSY125	MST-012
XS400J/K Maxim	82-83	SSY125	MST-012
XS400RJ/RK Seca	82-83	SSY125	MST-012
XS400SG/SH Special	80-81	SSY125	MST-012
XS400SJ Heritage Special	1982	SSY125	MST-012
SR500E/F/G/H	78-81	SSY080	MST-011
TX500/A	73-74	SSY500	MST-013
XS500B/C/D/E	75-78	SSY500	MST-013
XT500C/D/E/F/G/H Dual Sport	76-81	SSY080	MST-011
XV500K Virago	1983	SSY125	MST-012

Aplicacao de Kits de Moto Rolamento Coluna de Direcção

XV535T/TC/U Virago	87-88	SSY125	MST-012
XV535A/AC Virago	1990	SSY125	MST-012
XV535E/EC-L/LC Virago	93-99	SSY125	MST-012
XV535SF/SFC-SJ/SJC Virago	94-97	SSY125	MST-012
XJ550H/J/K Maxim	81-83	SSY125	MST-012
XJ550RH/RJ/RK Seca	81-83	SSY125	MST-012
XZ550RJ/RK Vision	82-83	SSY500	MST-013
FJ600L/LC/N/NC	84-85	SSY125	MST-012
FZ600S/SC/T/TC/U/UC	86-88	SSY500	MST-013
FZR600W/WC/AC	89-90	SSH901	MST-003
FZR600RA/RAC-RL/RLC	90-99	SSH901	MST-003
XJ600SD/SDC-SK/SKC Seca II	92-98	SSH901	MST-003
SRX600S/SC	1986	SSY500	MST-013
YX600S/SC-A/AC Radian	86-90	SSY125	MST-012
YZF600RG/RGC-RV/RVC	1995-2006	SSH901	MST-003
YZF-R6L/LC-T/TC	1999-2005	SSS903R	MST-007
YZF-R6SN/SNC Champions LTD. ED	2001	SSS903R	MST-007
XS1/XS1B/XS2 650	70-72	SSY500	MST-013
TX650/A	73-74	SSY500	MST-013
XS650B/C/D/E/F/2F	75-79	SSY500	MST-013
XS650G/H Special II	80-81	SSY500	MST-013
XS650SE/SF/SG/SH	78-81	SSY500	MST-013
XS650SJ/SK Heritage Special	82-83	SSY500	MST-013
XJ650G/H/J/K Maxim	80-83	SSY500	MST-013
XJ650LH Midnight Maxim	1981	SSY500	MST-013
XJ650LJ/LK Seca Turbo	82-83	SSY500	MST-013
XJ650RJ Seca	1982	SSY500	MST-013
XVS650L/LC-T/TC V-Star	1999-2005	SSH901	MST-003
XVS650AK/AKC-ATC V-Star Classic	1998-2005	SSH901	MST-003
XVS650ATR/ATRC/ATS Silverado	2003-2004	SSH901	MST-003
XVS650ATT/ATTC V-Star Silverado	2005	SSH901	MST-003
XVS650K/KC-T/TC V-Star Custom	1998-2005	SSH901	MST-003
FZ700T/TC	1987	SSH901	MST-003
FZX700S/SC/T/TC Fazer	86-87	SSH901	MST-003

YAMAHA STREET (cont'd)

Model	Year	Mfg. Ref #	Order No.
XJ700N/NC/S/SC Maxim	85-86	SSH901	MST-003
XJ700XN/XNC/XS/XSC Maxim X	85-86	SSH901	MST-003
XV700L/LC/N/NC Virago	84-85	SSH901	MST-003
XV700CS/CSC/CT/CTC Virago	86-87	SSH901	MST-003
XV700SS/SSC Virago	1986	SSH901	MST-003

Aplicacao de Kits de Moto Rolamento Coluna de Direcção

FZ750N/S/SC	85-86	SSH901	MST-003
FZ750U/UC	1988	SSH901	MST-003
FZR750RT/RU	87-88	SSH901	MST-003
TX750/A	73-74	SSY500	MST-013
XS750D/2D/E/F	77-79	SSH901	MST-003
XS750SE/SF Special	78-79	SSH901	MST-003
XJ750J/K Maxim	82-83	SSY500	MST-013
XJ750MK Midnight Maxim	1983	SSY500	MST-013
XJ750RH/RJ/RK Seca	81-83	SSY500	MST-013
XV750H/J/K Virago	81-83	SSY500	MST-013
XV750MK Midnight Virago	1983	SSY500	MST-013
XV750U/UC-G/GC Virago	88-95	SSH901	MST-003
XV750H1/HC1/J1/J1C Virago	96-97	SSH901	MST-003
YZF750RF/RFC	1994	SSH901	MST-003
YZF750RH/RHC~RK/RKC	96-98	SSH901	MST-003
TDM850D/DC/E/EC	92-93	SSH901	MST-003
XS850G/H	80-81	SSH901	MST-003
XS850LG/LH Midnight Special	80-81	SSH901	MST-003
XS850SG/SH Special	80-81	SSH901	MST-003
XJ900RK Seca	1983	SSH901	MST-003
XV920J/K/MK Virago	82-83	SSY500	MST-013
XV920RH/RJ	81-82	SSY500	MST-013
FZR1000T/TC-G/GC	87-95	SSH901	MST-003
FZS1000N/NC-T/TC FZ1	2001-2005	SSH901	MST-003
XV1000L/LC/N/NC Virago	84-85	SSH901	MST-003
YZF1000R/RJC	1997	SSH901	MST-003
YZF1000RK/RKC	1998	SSS903R	MST-007
YZF-R1L/LC-T/TC	1999-2005	SSS903R	MST-007
YZF-R1SN/SNC Champions LTD.ED.	2001	SSS903R	MST-007
FJ1100L/LC/N/NC	84-85	SSH901	MST-003
XJ1100J Maxim	1982	SSH901	MST-003
XS1100E/F/G/H	78-81	SSH901	MST-003
XS1100LG/LH Midnight Special	80-81	SSH901	MST-003
XS1100SF/SG/SH Special	79-81	SSH901	MST-003
XV1100S/SC-L/LC Virago	86-99	SSH901	MST-003
XV1100SH/SHC-SK/SKC Virago	96-98	SSH901	MST-003
XVS1100A V-Star 1100 Classic	2000-2004	SSH901	MST-003
XVS1100A V-Star 1100 Silverado	2003-2005	SSH901	MST-003
XVS1100AT V-Star 1100 Silverado	2005	SSH901	MST-003
XVS1100AW V-Star 1100 Classic	2003-2005	SSH901	MST-003
XVS1100L/LC-S/SC V-Star Custom	1999-2004	SSH901	MST-003
FJ1200S/SC/T/TC	86-87	SSH901	MST-003

Aplicacao de Kits de Moto Rolamento Coluna de Direcção

FJ1200W/WC/A/AC/B/BC/D/DC	89-92	SSH901	MST-003
FJ1200AD/ADC/AE/AEC (ABS)	92-93	SSH901	MST-003
VMX12N/NC/S/SC V-Max	85-86	SSH901	MST-003
VMX12U/UC-V/VC V-Max	1988-2006	SSH901	MST-003
XVZ12TK Venture	1983	SSH901	MST-003
XVZ12TDK Venture Royale	1983	SSH901	MST-003
XVZ12L/KC2 Venture	1984	SSH901	MST-003
XVZ13DL/DN Venture Royale	84-85	SSH901	MST-003
XVZ12DKC2 Venture Royale	1984	SSH901	MST-003
XVZ13DS/DSC/DTC Venture Royale	86-87	SSH901	MST-003
XVZ13T/TC/U/UC Venture	87-88	SSH901	MST-003
XVZ13D Venture Royale	89-93	SSH901	MST-003
XVZ13AH/AHC-AN/ANC Royal Star	1996-2001	SSH901	MST-003
XVZ13AT Royal Star Tour Classic	96-00	SSH901	MST-003
XVZ13LT Royal Star Tour Deluxe	1997-2001	SSH901	MST-003
XVZ13TF Royal Star Venture	1999-2001	SSH901	MST-003
XVZ13TFS Venture Limited Edition	2000	SSH901	MST-003
XVZ1300CTT Royal Star Tour Deluxe	2005	SSH901	MST-003
XVZ1300TFS Royal Star Midnight	2002-2004	SSH901	MST-003
XVZ1300TFSMC Royal Star Venture	2000	SSH901	MST-003
XVZ1300TF Royal Star Venture	1999-2004	SSH901	MST-003
XV1600A Road Star	1999-2003	SSH901	MST-003
XV1600AT Road Star Silverado	1999-2003	SSH901	MST-003
XV1600 Road Star Limited Edition	2003	SSH901	MST-003
XV1600AS Road Star Midnight	2001-2003	SSH901	MST-003
XV1700AM Road Star Midnight	2004-2005	SSH901	MST-003
XV1700AS/ASC/AT/ATC Road Star	2004-2005	SSH901	MST-003
XV1700ATS/ATSC/ATT/ATTC	2004-2005	SSH901	MST-003
XV1700AWT/AWTC Road Star	2005	SSH901	MST-003

YAMAHA ATV

Model	Year	Mfg. Ref #	Order No.
YT125N Tri-Moto	1985	SSY080	MST-011
YT175J/K Tri-Moto	82-83	SSY080	MST-011
YTM200K/EK Tri-Moto	1983	SSY080	MST-011
YTM200N/ERN Tri-Moto	1984	SSY125	MST-012
YTM225DXK/DXL/DXN Tri-Moto	83-85	SSY080	MST-011
YTM225DRN/DRS Tri-Moto	85-86	SSY125	MST-012

YAMAHA DUAL SPORT & OFFROAD

Model	Year	Mfg. Ref #	Order No.
DT50U/W/A	88-90	SSY080	MST-011

Aplicacao de Kits de Moto Rolamento Coluna de Direcção

YZ50G	1980	SSY080	MST-011
JT2/JT2MX-60 Mini	1972	SSY080	MST-011
YZ60H/J/K	81-83	SSY080	MST-011
BW80S/T/U/A	86-90	SSY080	MST-011
DT80H/J/K	81-83	SSY080	MST-011
GT80A-G	74-80	SSY080	MST-011
GT1/GTMX-80	1973	SSY080	MST-011
GTMXA/MXB/MXC-80	74-76	SSY080	MST-011
GTMXD/MXE/MXF-80	77-79	SSY080	MST-011
MX80G/H/J	80-82	SSY080	MST-011
TY80A/B Trials	74-75	SSY080	MST-011
YZ80A/B/C/D/E/F/G/H/J/K	74-83	SSY080	MST-011
HT1/HT1B/HT1BM-90 Enduro	70-71	SSY080	MST-011
TT-R90M/MC-EV	00-06	SSY080	MST-011
DT100A-K	74-83	SSY080	MST-011
LT2/LT3-100	72-73	SSY080	MST-011
LT2M/LT2MX-100	72-73	SSY080	MST-011
MX100A/B	74-75	SSY080	MST-011
MX100F/G/H/J/K	79-83	SSY080	MST-011
RS100B/C	75-76	SSY080	MST-011
RT100A-M	90-00	SSY080	MST-011
YZ100C/D/E/F/G/H	76-81	SSY080	MST-011
YZ100J/K	82-83	SSH901	MST-003
AT1M/AT1MB-125	69-70	SSY080	MST-011
AT1MX/AT2M/ATMX-125	71-73	SSY080	MST-011
AT1E/AT1B/AT1C-125 Enduro	69-71	SSY080	MST-011
AT2/AT3-125 Enduro	72-73	SSY080	MST-011
DT125A-H Enduro	74-81	SSY080	MST-011
IT125G/H	80-81	SSY080	MST-011
MX125A/B/C	74-76	SSY080	MST-011
XT125J/K/KC Dual Sport	82-83	SSY080	MST-011
YZ125A/B/C/X	74-76	SSY080	MST-011
YZ125D/E/F/G/H/J	77-82	SSH901	MST-003
YZ125K/L/N/S	83-86	SSH901	MST-003
YZ125T/U/W/A/B/D1	87-92	SSY901	MST-003
YZ125E1/F1/G1	93-95	SSY901	MST-003
CT1/B/C/CT2/CT3 175 Enduro	69-73	SSY080	MST-011
DT175A/B/C	74-76	SSY080	MST-011
DT175F/G/H	79-81	SSY080	MST-011
IT175D/E/F/G/H/J/K	77-83	SSH901	MST-003
MX175A/B	74-75	SSY080	MST-011
MX175G/H/J	79-81	SSY080	MST-011

Aplicacao de Kits de Moto Rolamento Coluna de Direcção

TY175B/C Trials	75-76	SSY080	MST-011
YZ175C	1976	SSY080	MST-011
BW200N/S/ES/ET/EU	85-88	SSY080	MST-011
IT200L/N/S	84-86	SSH901	MST-003
TW200T/TC-N/NC Trailway	1987-2001	SSY080	MST-011
XT200J/K/KC Dual Sport	82-83	SSY080	MST-011
DT1/DT1B/DT1S-250 Enduro	68-69	SSY080	MST-011
DT1C/DT1E/DT2/DT3-250 Enduro	70-73	SSY080	MST-011
DT250A/B/C/D/E/F Enduro	74-79	SSY080	MST-011
DT1CMX/DT1MX-250	1971	SSY080	MST-011
DT2MX-250	1972	SSY080	MST-011

YAMAHA DUAL SPORT & OFFROAD

Model	Year	Mfg. Ref #	Order No.
IT250D/E/F/G/H/J	77-82	SSH901	MST-003
IT250K	1983	SSH901	MST-003
MX250/A/B	73-75	SSY080	MST-011
TT250G/H/J	80-82	SSY080	MST-011
TT250RL/RLC	1999	SSY901	MST-003
TT-R250N/NC-T/TC	2001-2005	SSY901	MST-003
TY250A/C/D Trials	74-77	SSY080	MST-011
WR250FP/FR/FS/FT	2002-2005	SSY903T	
WR250ZB/ZD/ZE/ZF/ZG/ZH/ZJ	91-97	SSY901	MST-003
XT250G/H/J/K/KC Dual Sport	80-83	SSY080	MST-011
XT250L/LC Dual Sport	1984	SSH901	MST-003
YZ250A/B/C	74-76	SSY080	MST-011
YZ250D/E/F/G/H/J	77-82	SSH901	MST-003
YZ250K/L/N/S	83-86	SSH901	MST-003
YZ250T-G1	87-95	SSY901	
YZ250H1-T1	1996-2005	SSY903T	
YZ250FN-FV	2001-2006	SSY903T	
YZ250WRW/WRA	89-90	SSY901	
TT350S/T Offroad	86-87	SSH901	MST-003
XT350N/NC-M/MC Dual Sport	85-00	SSH901	MST-003
RT1M/RT1/RT2MX-360	70-72	SSY080	MST-011
MX360/A	73-74	SSY080	MST-011
RT1/RT1B/RT2/RT3-360 Enduro	70-73	SSY080	MST-011
DT360A	1974	SSY080	MST-011
YZ360A/B	74-75	SSY080	MST-011
DT400B/C/D/E	75-78	SSY080	MST-011
IT400C	1976	SSY080	MST-011
IT400D/E/F	77-79	SSH901	MST-003

Aplicacao de Kits de Moto Rolamento Coluna de Direcção

MX400B	1975	SSY080	MST-011
YZ400C	1976	SSY080	MST-011
YZ400D/E/F	77-79	SSH901	MST-003
YZ400FK/FL	98-99	SSY903T	
WR400FK/FL/FM	98-00	SSY903T	
IT425G	1980	SSH901	MST-003
WR426FN/FP	2001-2002	SSY903T	
YZ426FM/FN/FP	00-02	SSY903T	
WR450FR/FS/FT/FV	2003-2006	SSY903T	
YZ450FR/FS/FT/FV	2003-2006	SSY903T	
IT465H/J	81-82	SSH901	MST-003
YZ465G/H	80-81	SSH901	MST-003
IT490K/L	83-84	SSH901	MST-003
YZ490J/K/L/N/S/T/U/W/A	82-90	SSH901	MST-003
SC500/A Scrambler	73-74	SSY080	MST-011
TT500C/D/E/F/G/H Offroad	76-81	SSY080	MST-011
XT500C/D/E/F/G/H Dual Sport	76-81	SSY080	MST-011
WR500ZD/ZE	92-93	SSY901	
XT550J/K Dual Sport	82-83	SSH901	MST-003
TT600K/L/N/S Offroad	83-86	SSH901	MST-003
XT600L/LC-G/GC	84-95	SSH901	MST-003