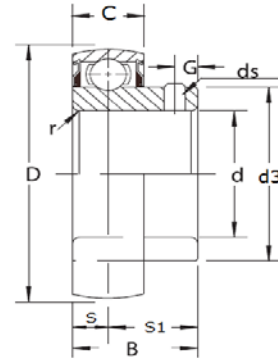


SB000 & SA000

SB000

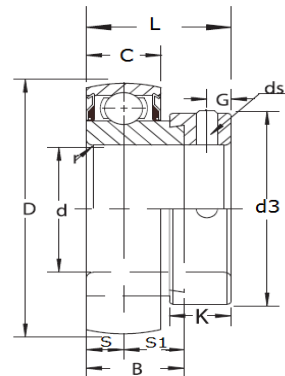
- ◆ Set screw locking
- ◆ Extra-Narrow inner ring
- ◆ Available cylindrical OD -prefix " C "
- ◆ Available stainless steel -prefix " S "



Crowned outer ring SB	Cylindrical outer ring CSB	Dimensions(mm)								Weight kg	Interchange			
		d	D	B	C	r min	S	G	ds		FYH			
SB000	CSB000	10	26	14	8	0.5	4	3	M3x0.35	0.02	K000			
SB001	CSB001	12	28	14.5	8	0.5	4	3	M3x0.35	0.03	K001			
SB002	CSB002	15	32	16.5	9	0.5	4.5	3.5	M4x0.5	0.05	K002			
SB003	CSB003	17	35	17.5	10	0.5	5	3.5	M4x0.5	0.05	K003			
SB004	CSB004	20	42	21	12	1	6	4	M5x0.5	0.09	K004			
SB005	CSB005	25	47	22.5	12	1	6	4.5	M5x0.5	0.10	K005			
SB006	CSB006	30	55	24.5	13	1.5	6.5	5	M5x0.5	0.15	K006			

SA000

- ◆ Eccentric locking collar
- ◆ Extra-Narrow inner ring
- ◆ Available cylindrical OD -prefix " C "
- ◆ Available stainless steel -prefix " S "

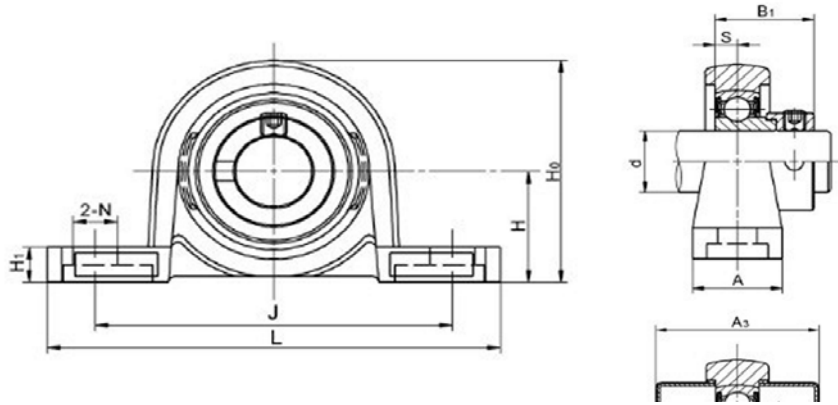


Crowned outer ring SA	Cylindrical outer ring CSA	Dimensions(mm)										Weight kg	Interchange	
		d	D	B	C	L	r min	S	K	d3	ds		Crowned outer ring	
SA000	CSA000	10	26	11	8	17.5	0.5	4	8.5	17	M4x0.7	0.03	U000	U000+ER
SA001	CSA001	12	28	11	8	17.5	0.5	4	8.5	19	M4x0.7	0.036	U001	U001+ER
SA002	CSA002	15	32	12	9	18.5	0.5	4.5	8.5	22	M4x0.7	0.05	U002	U002+ER
SA003	CSA003	17	35	13.5	10	20.5	0.5	5	9.5	25	M4x0.7	0.06	U003	U003+ER
SA004-12	CSA004-12	19.05	42	16.7	12	24.6	1	6	11.1	30	M5x0.8	0.10	U004	U004+ER
SA004	CSA004	20												
SA005-14	CSA005-14	22.225	47	17.5	12	25.4	1	6	11.9	36	M5x0.8	0.13	U005	U005+ER
SA005-15	CSA005-15	23.813												
SA005	CSA005	25												
SA005-16	CSA005-16	25.4												
SA006-18	CSA006-18	28.575	55	18.5	13	26.5	1.5	6.5	11.9	42	M5x0.8	0.19	U006	U006+ER
SA006	CSA006	30												
SA006-19	CSA006-19	30.163												
SA006-20	CSA006-20	31.75												
SA007	CSA007	35	62	20	14	29.5	1.5	7	13.5	48	M6x0.75	0.25		

UP000 & KP000

UP000

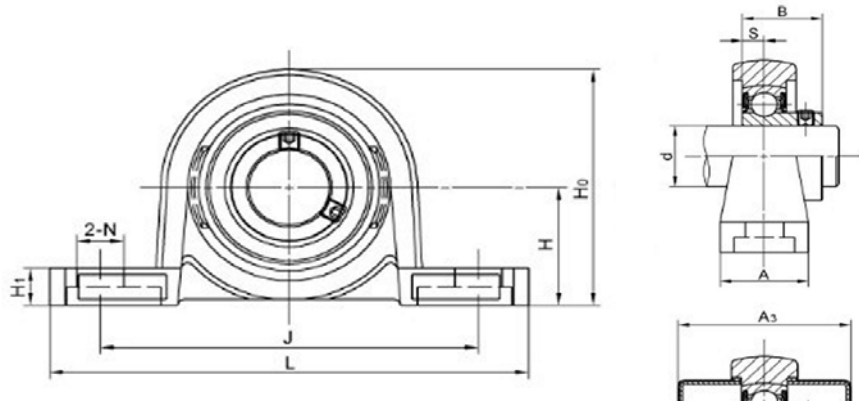
- ◆ Bearing - GCr15
- ◆ Housing - Zinc-alloy die casting
- ◆ Eccentric locking collar
- carbon steel black oxide treatment
- ◆ NBR seal
- ◆ Available with stainless steel cover



Unit No.	Shaft d	Dimensions(mm)										Bolt Size	Bearing	Housing	Weight
	(mm)	H	L	J	A	H1	Ho	N	S	B1	A3				
UP000	10	18	67	53	16	6	35	7	4	17.5	33	M6	U000	P000	0.08
UP001	12	19	71	56	16	6	38	7	4	17.7	33	M6	U001	P001	0.1
UP002	15	22	80	63	16	7	43	7	4.5	18.7	34	M6	U002	P002	0.14
UP003	17	24	85	67	18	7	47	7	5	20.7	38	M6	U003	P003	0.17
UP004	20	28	100	80	20	9	55	10	6	24.2	46	M8	U004	P004	0.26
UP005	25	32	112	90	20	10	62	10	6	25	47	M8	U005	P005	0.33
UP006	30	36	132	106	26	11	70	13	6.5	26	50	M10	U006	P006	0.5

KP000

- ◆ Bearing - GCr15
- ◆ Housing - Zinc-alloy die casting
- ◆ Set screws
- ◆ NBR seal
- ◆ Available with stainless steel cover



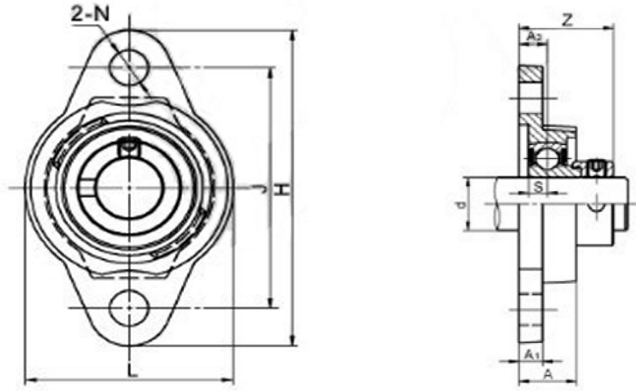
Unit No.	Shaft d	Dimensions! mm)										Bolt Size	Bearing No.	Housing No.	Weight
	(mm)	H	J	A2	A1	A	N	L	s	Z	A3				
KP000	10	18	67	53	16	6	35	7	4	14	28.3	M6	K000	P000	0.03
KP001	12	19	71	56	16	6	38	7	4	14.5	30	M6	K001	P001	0.04
KP002	15	22	80	63	16	7	43	7	4.5	16.5	33	M6	K002	P002	0.05
KP003	17	24	85	67	18	7	47	7	5	17.5	36	M6	K003	P003	0.07
KP004	20	28	100	80	20	9	55	10	6	21	40	M8	K004	P004	0.11
KP005	25	32	112	90	20	10	62	10	6	22.5	41	M8	K005	P005	0.15
KP006	30	36	132	106	26	11	70	13	6.5	24.5	43	M10	K006	P006	0.21



UFL000 & KFL000

UFL000

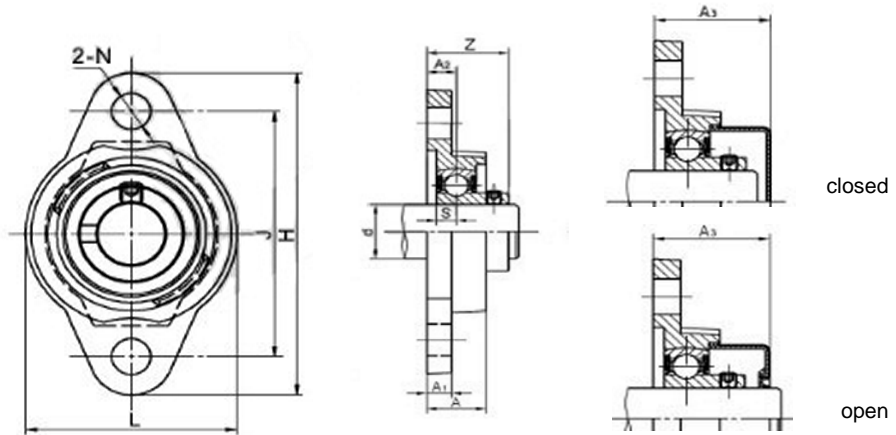
- ◆ Bearing - GCr15
- ◆ Housing - Zinc-alloy die casting
- ◆ Eccentric locking collar
 - carbon steel black oxide treatment
- ◆ NBR seal
- ◆ Available with stainless steel cover



Unit No.	Shaft d	Dimensions(mm)										Bolt Size mm	Bearing No.	Housing No.	Weight (kg)
	(mm)	H	J	A2	A1	A	N	L	s	Z	A3				
UFL000	10	60	45	6	6	12	7	36	4	19.7		M6	U000	FL000	0.07
UFL001	12	63	48	6	6	12	7	38	4	19.7		M6	U001	FL001	0.08
UFL002	15	67	53	6.5	6.5	13	7	42	4.5	20.7		M6	U002	FL002	0.11
UFL003	17	71	56	7	7	14	7	46	5	22.7		M6	U003	FL003	0.14
UFL004	20	90	71	8	8	16	10	55	6	26.2		M8	U004	FL004	0.23
UFL005	25	95	75	8	8	16	10	60	6	27		M8	U005	FL005	0.27
UFL006	30	112	85	9	9	18	13	70	6.5	28.5		M10	U006	FL006	0.39

KFL000

- ◆ Bearing - GCr15
- ◆ Housing - Zinc-alloy die casting
- ◆ Set screws
- ◆ NBR seal
- ◆ Available with stainless steel cover



Unit No.	Shaft d	Dimensions! mm)										Bolt Size mm	Bearing No.	Housing No.	Weight (kg)
	(mm)	H	J	A2	A1	A	N	L	s	Z	A3				
KFL000	10	60	45	6	6	12	7	36	4	16	20.3	M6	K000	FL000	0.07
KFL001	12	63	48	6	6	12	7	38	4	16.5	21	M6	K001	FL001	0.08
KFL002	15	67	53	6.5	6.5	13	7	42	4.5	18.5	23	M6	K002	FL002	0.11
KFL003	17	71	56	7	7	14	7	46	5	19.5	25	M6	K003	FL003	0.14
KFL004	20	90	71	8	8	16	10	55	6	23	28	M8	K004	FL004	0.23
KFL005	25	95	75	8	8	16	10	60	6	24.5	28.5	M8	K005	FL005	0.27
KFL006	30	112	85	9	9	18	13	70	6.5	27	30.5	M10	K006	FL006	0.39

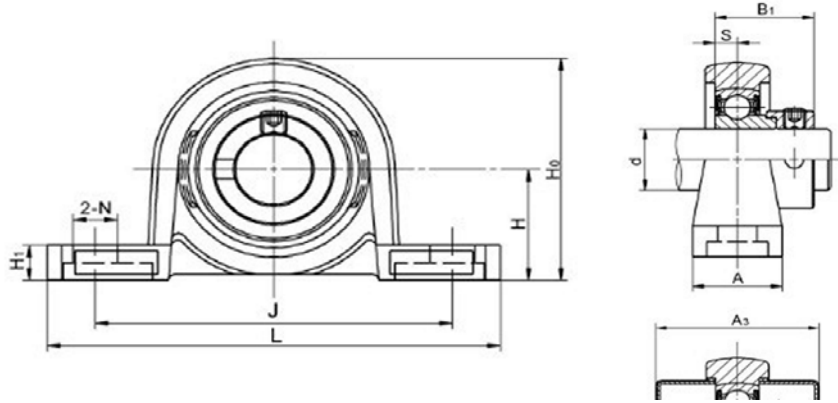


MUP000 & MKP000

SSUP000

Bearing 440 stainless steel
 Housing 304 stainless steel
 Eccentric collar 304 stainless steel

Available with stainless steel cover

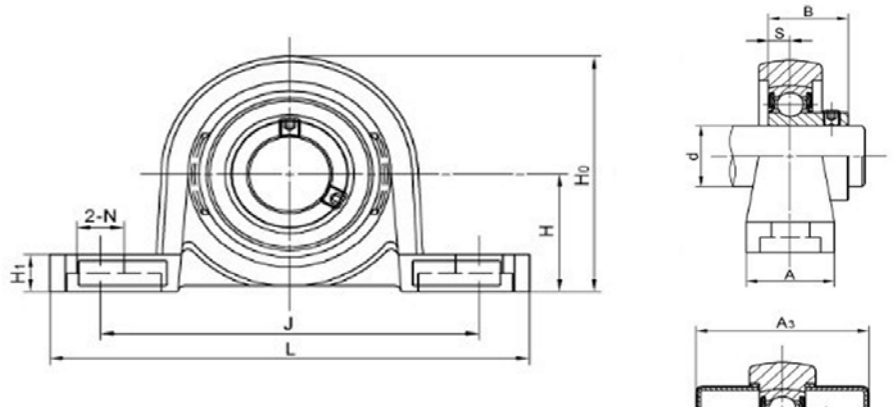


Unit No.	Shaft d	Dimensions(mm)										Bolt Size	Bearing No.	Housing No.	Weight (kg)
	(mm)	H	L	J	A	H1	Ho	N	S	B1	A3				
SSUP000	10	18	67	53	16	6	35	7	4	17.5	33	M6	SU000	SP000	0.08
SSUP001	12	19	71	56	16	6	38	7	4	17.7	33	M6	SU001	SP001	0.1
SSUP002	15	22	80	63	16	7	43	7	4.5	18.7	34	M6	SU002	SP002	0.14
SSUP003	17	24	85	67	18	7	47	7	5	20.7	38	M6	SU003	SP003	0.17
SSUP004	20	28	100	80	20	9	55	10	6	24.2	46	M8	SU004	SP004	0.26
SSUP005	25	32	112	90	20	10	62	10	6	25	47	M8	SU005	SP005	0.33
SSUP006	30	36	132	106	26	11	70	13	6.5	26	50	M10	SU006	SP006	0.5

SSUP000

Bearing 440 stainless steel
 Housing 304 stainless steel
 Set Screw 304 stainless steel

Available with stainless steel cover



Unit No.	Shaft d	Dimensions! mm)										Bolt Size	Bearing No.	Housing No.	Weight (kg)
	(mm)	H	J	A2	A1	A	N	L	s	Z	A3				
SSKP000	10	18	67	53	16	6	35	7	4	14	28.3	M6	SK000	SP000	0.03
SSKP001	12	19	71	56	16	6	38	7	4	14.5	30	M6	SK001	SP001	0.04
SSKP002	15	22	80	63	16	7	43	7	4.5	16.5	33	M6	SK002	SP002	0.05
SSKP003	17	24	85	67	18	7	47	7	5	17.5	36	M6	SK003	SP003	0.07
SSKP004	20	28	100	80	20	9	55	10	6	21	40	M8	SK004	SP004	0.11
SSKP005	25	32	112	90	20	10	62	10	6	22.5	41	M8	SK005	SP005	0.15
SSKP006	30	36	132	106	26	11	70	13	6.5	24.5	43	M10	SK006	SP006	0.21