



steel cage-one piece

tapered bore- suffix "K"



nylon cage

suffix " TN "



with two seals

suffix " 2RS "



extended inner ring

code 11200



brass cage-two piece

sufix " M "

◇Remark: all the different cages is available, please tell us your requirement when you give us order.

Bearing No.		Dimensions(mm)				Load Rating(KN)		Speed Rating(r/min)		Weight Kg/pc
Cylindrical Bore	Tapered Bore	d	D	B	Bi	Dynamic	Static	Grease	Oil	
						C	Co	Lubrication	Lubrication	
135 TN		5	19	6		2.50	0.55	32000	38000	0.009
196 TN		6	15	5		1.60	0.40	31000	37000	0.006
126 TN		6	19	6		2.50	0.55	32000	38000	0.009
127 TN		7	22	7		2.70	0.65	30000	36000	0.014
108 TN		8	22	7		2.70	0.65	30000	36000	0.014
129 TN		9	26	8		3.90	0.95	26000	32000	0.022
1200	1200K	10	30	9		5.48	1.20	24000	28000	0.035
2200	2200K		30	14		7.12	1.58	24000	28000	0.050
2200-2RS	2200-2RSK		30	14		7.12	1.58	17000		0.048
1300	1300K		35	11		7.22	1.62	20000	24000	0.060
2300	2300K		35	17		11.00	2.45	18000	22000	0.090
2300-2RS	2300-2RSK		35	17		11.00	2.45	13000		0.090
1201	1201K	12	32	10		5.55	1.25	22000	26000	0.042
2201	2201K		32	14		8.80	1.80	22000	26000	0.059
2201-2RS	2201-2RSK		32	14		11.00	2.45	16000		0.053
1301	1301K		37	12		9.42	2.12	18000	22000	0.070
2301	2301K		37	17		12.50	2.72	17000	22000	0.104
2301-2RS	2301-2RSK		37	17		12.50	2.72	12000		0.104
1202	1202K	15	35	11		7.48	1.75	18000	22000	0.051
2202	2202K		35	14		7.65	1.80	18000	22000	0.060
2202-2RS	2202-2RSK		35	14		7.65	1.80	14000		0.058
1302	1302K		42	13		9.50	2.28	16000	20000	0.100
2302	2302K		42	17		12.00	2.88	14000	18000	0.110
2302-2RS	2202-2RSK		42	17		12.00	2.88	11000		0.110



steel cage-one piece

tapered bore- suffix "K"



nylon cage

suffix " TN "



with two seals

suffix " 2RS "



extended inner ring

code 11200



brass cage-two piece

suffix " M "

◇Remark: all the different cages is available, please tell us your requirement when you give us order.

Bearing No.		Dimensions(mm)				Load Rating(KN)		Speed Rating(r/min)		Weight Kg/pc
Cylindrical Bore	Tapered Bore	d	D	B	Bi	Dynamic	Static	Grease	Oil	
						C	Co	Lubrication	Lubrication	
1203	1203K	17	40	12		7.90	2.02	16000	20000	0.076
2203	2203K		40	16		9.00	2.45	16000	20000	0.090
2203-2RS	2203-2RSK		40	16		9.00	2.45	12000		0.089
1303	1303K		47	14		12.50	3.18	14000	17000	0.140
2303	2303K		47	19		14.50	3.58	13000	16000	0.170
2303-2RS	2303-2RSK		47	19		14.50	3.58	9400		0.160
1204	1204K	20	47	14	40	9.95	2.65	14000	17000	0.120
11204			47	14		9.95	2.65		10000	0.185
2204	2204K		47	18		12.50	3.28	14000	17000	0.140
2204-2RS	2204-2RSK		47	18		12.70	3.40	10000		0.140
1304	1304K		52	15		12.50	3.38	12000	15000	0.170
2304	2304K		52	21		17.80	4.75	11000	14000	0.220
2304-2RS	2304-2RSK		52	21		17.80	4.75	9500		0.210
1205	1205K	25	52	15	44	12.00	3.30	12000	14000	0.140
11205			52	15		12.00	3.30		10000	0.226
2205	2205K		52	18		12.50	3.40	12000	14000	0.190
2205-2RS	2205-2RSK		52	18		12.50	3.40	9000		0.160
1305	1305K		62	17		17.80	5.05	10000	13000	0.260
2305	2305K		62	24		24.50	6.48	9500	12000	0.350
2305-2RS	2305-2RSK	62	24	24.50	6.40	7500		0.340		
1206	1206K	30	62	16	48	15.80	4.70	10000	12000	0.229
11206			62	16		15.80	4.70		8500	0.364
2206	2206K		62	20		15.20	4.60	10000	12000	0.260
2206-2RS	2206-2RSK		62	20		15.20	4.60	7500		0.260
1306	1306K		72	19		21.50	6.28	8500	11000	0.398
2306	2306K		72	27		31.50	8.68	8000	10000	0.500
2306-2RS	2306-2RSK		72	27		31.50	8.68	6700		0.510



steel cage-one piece



nylon cage



with two seals



extended inner ring



brass cage-two piece

tapered bore- suffix "K"

suffix " TN "

suffix " 2RS "

code 11200

sufix " M "

◇Remark: all the different cages is available, please tell us your requirement when you give us order.

Bearing No.		Dimensions(mm)				Load Rating(KN)		Speed Rating(r/min)		Weight Kg/pc
Cylindrical Bore	Tapered Bore	d	D	B	Bi	Dynamic	Static	Grease	Oil	
						C	Co	Lubrication	Lubrication	
1207	1207K	35	72	17	52	15.80	5.08	8500	10000	0.320
11207			72	17		15.80	5.08		7500	
2207	2207K	72	72	23		21.80	6.65	8500	10000	0.440
2207-2RS	2207-2RSK		72	23		21.00	6.00		6300	
1307	1307K	80	80	21		25.00	7.95	7500	9500	0.510
2307	2307K		80	31		39.20	11.00		7100	
2307-2RS	2307-2RSK	80	31	39.00	11.00	5600	0.700			
1208	1208K	40	80	18	56	19.00	6.95	8500	10000	0.420
11208			80	18		19.00	6.95		6700	
2208	2208K	80	80	23		31.90	10.00	7500	9000	0.510
2208-2RS	2208-2RSK		80	23		31.90	10.00		5600	
1308	1308K	90	90	23		33.80	11.20	6700	8000	0.720
2308	2308K		90	33		54.00	16.00		6300	
2308-2RS	2308-2RSK	90	33	54.00	16.00	5000	0.960			
1209	1209K	45	85	19	58	22.90	7.87	7500	9000	0.470
11209			85	19		22.90	7.87		6000	
2209	2209K	85	85	23		32.50	10.60	7000	8500	0.550
2209-2RS	2209-2RSK		85	23		32.50	10.60		5300	
1309	1309K	100	100	25		39.00	13.40	6300	7500	0.960
2309	2309K		100	36		63.70	19.30		5600	
2309-2RS	2309-2RSK	100	36	39.00	13.40	4500	1.300			
1210	1210K	50	90	20	58	26.50	9.15	7000	8500	0.530
11210			90	20		26.50	9.15		5600	
2210	2210K	90	90	23		33.80	11.20	6300	7500	0.600
2210-2RS	2210-2RSK		90	23		33.80	11.20		4800	
1310	1310K	110	110	27		43.60	14.00	5600	6700	1.200
2310	2310K		110	40		63.70	20.00		5300	
2310-2RS	2310-2RSK	110	40	43.60	14.00	4000	1.650			



steel cage-one piece



nylon cage



with two seals



extended inner ring



brass cage-two piece

tapered bore- suffix "K"

suffix " TN "

suffix " 2RS "

code 11200

sufix " M "

◇Remark: all the different cages is available, please tell us your requirement when you give us order.

Bearing No.		Dimensions(mm)				Load Rating(KN)		Speed Rating(r/min)		Weight Kg/pc
Cylindrical Bore	Tapered Bore	d	D	B	Bi	Dynamic	Static	Grease	Oil	
						C	Co	Lubrication	Lubrication	
1211	1211K	55	100	21	60	26.60	9.60	5800	7100	0.710
11211			100	21		26.60	9.60		5600	1.130
2211	2211K		100	25		26.60	9.60	5800	7100	0.790
2211-2RS	2211-2RSK		100	25		26.60	9.60	3900		0.785
1311	1311K	120	29			51.30	17.90	5000	6200	1.560
2311	2311K		43			75.30	24.00	4600	5800	2.100
2311-2RS	2311-2RSK		43			75.30	24.00	3400		2.100
1212	1212K		60	110		22	62	30.20	11.50	5200
11212		110		22	30.20	11.50			4500	1.510
2212	2212K	110		28	34.10	12.60		5300	6500	1.090
2212-2RS	2212-2RSK	110		28	34.10	12.60		3500		1.080
1312	1312K	130		31	57.20	20.80		4500	5500	1.960
2312	2312K	130		46	87.20	28.00		4200	5200	2.600
2312-2RS	2312-2RSK	130		46	87.20	28.00		3000		2.580
1213	1213K	65		120	23			31.00	12.50	4800
2213	2213K		120	31	43.50		16.40	4900	5900	1.460
2213-2RS	2213-2RSK		120	31	43.50		16.40	3200		1.460
1313	1313K		140	33	61.70		22.90	4300	5200	2.450
2313	2313K		140	48	95.80		32.50	3800	5000	3.230
2313-2RS	2313-2RSK		140	48	95.80		32.50	2900		3.230
1214	1214K	70	125	24		34.60	13.80	4600	5700	1.260
2214	2214K		125	31		43.90	17.10	4500	5600	1.520
2214-2RS	2214-2RSK		125	31		43.90	17.10	3100		1.520
1314	1314K		150	35		74.00	27.70	4000	4900	2.990
2314	2314K		150	51		99.60	35.70	3800	4800	4.230
2314-2RS	2314-2RSK		150	51		99.60	35.70	2600		4.230



steel cage-one piece

tapered bore- suffix "K"



nylon cage

suffix " TN "



with two seals

suffix " 2RS "



extended inner ring

code 11200

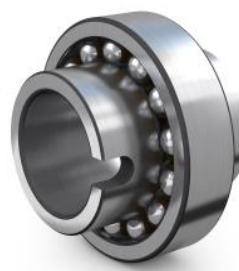


brass cage-two piece

suffix " M "

◇Remark: all the different cages is available, please tell us your requirement when you give us order.

Bearing No.		Dimensions(mm)				Load Rating(KN)		Speed Rating(r/min)		Weight Kg/pc
Cylindrical Bore	Tapered Bore	d	D	B	Bi	Dynamic	Static	Grease	Oil	
						C	Co	Lubrication	Lubrication	
1215	1215K	75	130	25		38.80	15.70	4300	5300	1.360
2215	2215K		130	31		44.20	17.80	4300	5300	1.620
2215-2RS	2215-2RSK		130	31		44.20	17.80	2900		1.620
1315	1315K	160	160	37		78.90	29.90	4000	4900	3.560
2315	2315K		160	55		103.00	36.80	3400	4600	5.130
2315-2RS	2315-2RSK		160	55		103.00	36.80	2600		5.130
1216	1216K	80	140	26		39.80	17.00	4000	4900	1.670
2216	2216K		140	33		49.00	19.90	3900	4500	2.010
2216-2RS	2216-2RSK		140	33		49.90	19.90	2700		2.010
1316	1316K	170	170	39		88.10	33.10	3500	4300	4.180
2316	2316K		170	58		129.00	45.70	3300	4100	6.100
2316-2RS	2316-2RSK		170	58		129.00	45.70	2300		6.100
1217	1217K	85	150	28		49.20	20.80	3800	4600	2.070
2217	2217K		150	36		58.30	23.60	3700	4500	2.520
2217-2RS	2217-2RSK		150	36		58.30	23.60	2500		2.520
1317	1317K	180	180	41		97.30	37.80	3300	4000	4.980
2317	2317K		180	60		141.00	51.50	3000	3900	7.050
1218	1218K	90	160	30		56.80	23.40	3500	4300	2.520
2218	2218K		160	40		67.70	27.20	3400	4200	3.400
2218-2RS	2218-2RSK		160	40		67.70	27.20	2400		3.400
1318	1318K	190	190	43		116.00	44.40	3100	3800	5.800
2318	2318K		190	64		153.00	58.00	2800	3600	8.440
1219	1219K	95	170	32		57.00	24.30	3300	4000	3.100
2219	2219K		170	43		82.70	34.30	3200	3900	4.100
2219-2RS	2219-2RSK		170	43		82.70	34.30	2200		4.100
1319	1319K	200	200	45		132.00	50.80	2900	3600	6.690
2319	2319K		200	67		166.00	64.80	2700	3400	9.790



steel cage-one piece

nylon cage

with two seals

extended inner ring

brass cage-two piece

tapered bore- suffix "K"

suffix " TN "

suffix " 2RS "

code 11200

sufix " M "

◇Remark: all the different cages is available, please tell us your requirement when you give us order.

Bearing No.		Dimensions(mm)				Load Rating(KN)		Speed Rating(r/min)		Weight Kg/pc
Cylindrical Bore	Tapered Bore	d	D	B	Bi	Dynamic	Static	Grease	Oil	
						C	Co	Lubrication	Lubrication	
1220	1220K	100	180	34		69.00	29.70	3100	3800	3.700
2220	2220K		180	46		80.90	34.00	3000	3700	4.980
2220-2RS	2220-2RSK		180	46		80.90	34.00	2100		4.980
1320	1320K		215	47		143.00	57.30	2800	3400	8.300
2320	2320K		215	73		183.00	73.00	2400	3200	12.400
1221	1221K	105	190	36		77.00	34.00	2900	3600	4.370
2221	2221K		190	50		94.90	40.10	2800	3500	6.070
2221-2RS	2221-2RSK		190	50		94.90	40.10	2000		6.070
1321	1321K		225	49		149.00	60.00	2600	3200	10.000
2321	2321K		225	77		187.00	78.00	2300	2900	14.300
1222	1222K	110	200	38		80.20	35.20	2800	3400	5.150
2222	2222K		200	53		120.00	49.00	2700	3300	7.100
2222-2RS	2222-2RSK		200	53		120.00	49.00	1900		7.100
1322	1322K		240	50		150.00	63.00	2400	3000	11.800
2322	2322K		240	80		200.00	86.00	2200	2800	17.300