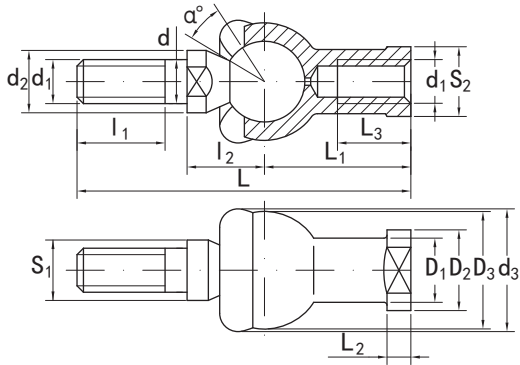


球头杆端关节轴承 SQZ..RS 系列

BALL JOINTS SQZ..RS SERIES

直链接头 Straight joint



壳体Housing	伸出杆Stud
锌基合金Zinc base alloy	碳钢Carbon steel 发黑Black oxidized
摩擦副Sliding contact surfaces: 锌合金/钢 Alloy/Steel	

型号 Part No.		尺寸 Dimensions															mm	载荷 Load ratings kN	重量 Weight kg
右螺纹 Right hand	左螺纹 Left hand	d	d ₁	d ₂	d ₃	l ₁	l ₂	S ₁	L	L ₁	L ₂	L ₃	D ₁	D ₂	D ₃	S ₂			
SQZ 5 RS	SQZL 5 RS	5	M5×0.8	9	20	8	11	7	46	24	4	12	9	11	17	9	15	2.8	0.025
SQZ 6 RS	SQZL 6 RS	6	M6×1.0	10	20	11	12.2	8	55.2	28	5	15	10	13	20	11	15	3.7	0.041
SQZ 8 RS	SQZL 8 RS	8	M8×1.25	12	24	12	16	10	65	32	5	16	12.5	16	24	14	15	5.8	0.075
SQZ 10 RS	SQZL 10 RS	10	M10×1.5	14	30	21	19.5	11	80.5	35	6.5	18	15	19	28	17	15	8.4	0.12
SQZ 10-1 RS	SQZL 10-1 RS	10	M10×1.25	14	30	15	19.5	11	74.5	35	6.5	18	15	19	28	17	15	8.4	0.12
SQZ 12 RS	SQZL 12 RS	12	M12×1.75	17	32	24	21	15	91	40	6.5	20	17.5	22	32	19	15	11	0.18
SQZ 12-1 RS	SQZL 12-1 RS	12	M12×1.25	17	32	17	21	15	84	40	6.5	20	17.5	22	32	19	15	11	0.18
SQZ 14 RS	SQZL 14 RS	14	M14×2.0	19	38	28	23.5	17	109	45	8	25	20	25	36	22	11	15	0.27
SQZ 14-1 RS	SQZL 14-1 RS	14	M14×1.5	19	38	22	23.5	17	103	45	8	25	20	25	36	22	11	15	0.27
SQZ 16 RS	SQZL 16 RS	16	M16×2.0	22	44	29	25.5	19	118	50	8	27	22	27	40	22	11	15	0.36
SQZ 16-1 RS	SQZL 16-1 RS	16	M16×1.5	22	44	23	25.5	19	112	50	8	27	22	27	40	22	11	15	0.36
SQZ 18 RS	SQZL 18 RS	18	M18×1.5	23	45	25	31	20	130.5	58	10	32	25	31	45	27	11	19	0.54
SQZ 20 RS	SQZL 20 RS	20	M20×1.5	27	50	25	29	24	133	63	10	38	27.5	34	45	30	7.5	19	0.57
SQZ 22 RS	SQZL 22 RS	22	M22×1.5	27	52	26	33	24	145	70	12	43	30	37	50	32	7.5	23	0.76

——不带密封罩产品型号为SQZ..

——The part number of ball joints without seal is SQZ..