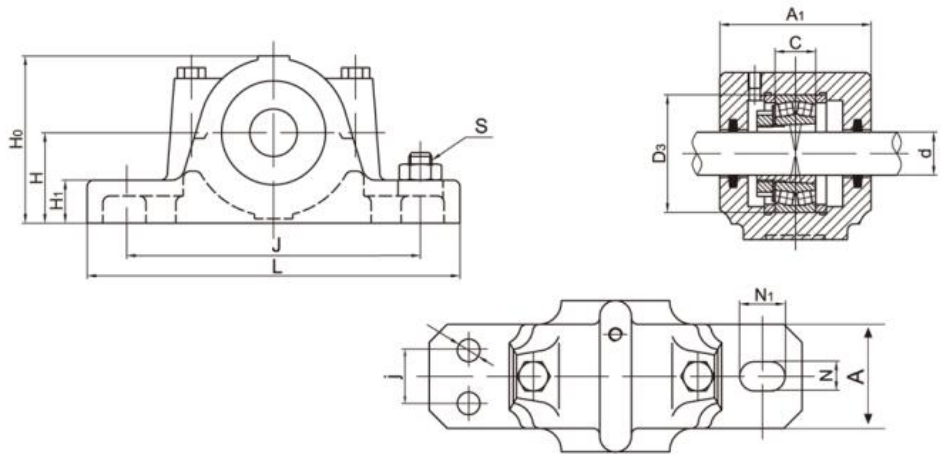
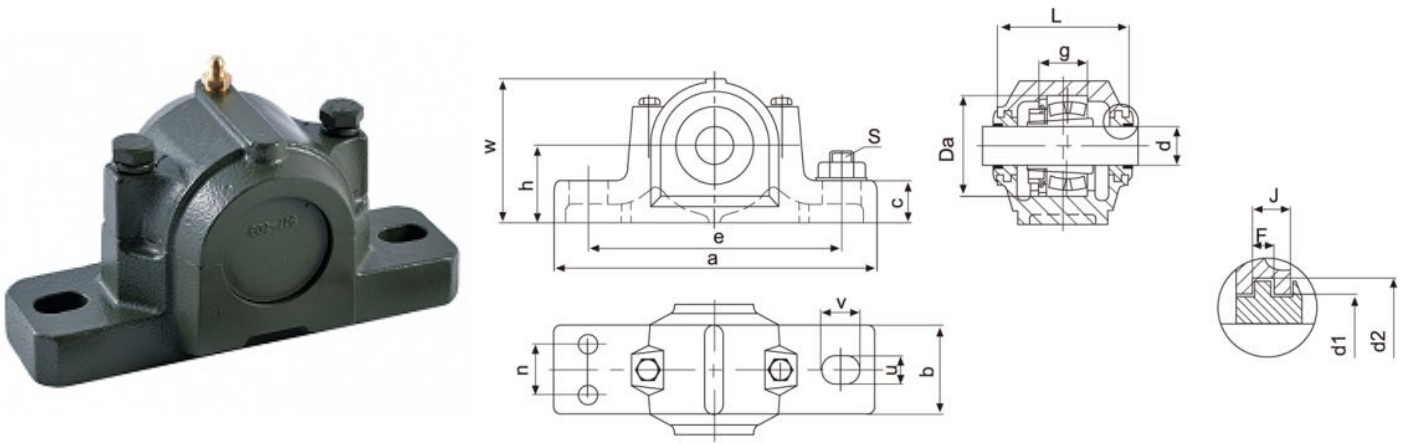


Housing No.	Shaft		Dimensions (mm)																Wt (kg)	Bearing No		Adapter Sleeve		Locating Ring	
	mm	in	D H8	L	A	H1	g	H	C	H0	J	S	N	N1	d2	d3	f1	f2				Number	qty		
SN505	20	3/4	52	165	46	22	25	40	67	75	130	M12	15	20	21.5	31	3	4.2	1.55	1205K	22205K	H205	HE205	SR52X5	2
SN505	20	3/4	52	165	46	22	25	40	67	75	130	M12	15	20	21.5	31	3	4.2	1.55	2205K		H305	HE305	SR52X7	1
SN506	25	1	62	185	52	22	30	50	77	90	150	M12	15	20	26.5	38	4	5.4	1.95	1206K	22206K	H206	HE206	SR62X7	2
SN506	25	1	62	185	52	22	30	50	77	90	150	M12	15	20	26.5	38	4	5.4	1.95	2206K		H306	HE306	SR62X10	1
SN507	30	1-1/8	72	185	52	22	33	50	82	95	150	M12	15	20	31.5	43	4	5.4	2.13	1207K	22207K	H207	HE207	SR72X8	2
SN507	30	1-1/8	72	185	52	22	33	50	82	95	150	M12	15	20	31.5	43	4	5.4	2.13	2207K		H307	HE307	SR72X10	1
SN508	35	1-1/4	80	205	60	25	33	60	85	110	170	M12	15	20	36.5	48	4	5.4	3.2	1208K	22208K	H208	HE208	SR80X7.5	2
SN508	35	1-1/4	80	205	60	25	33	60	85	110	170	M12	15	20	36.5	48	4	5.4	3.2	2208K		H308	HE308	SR80X10	1
SN509	40	1-1/2	85	205	60	25	31	60	85	112	170	M12	15	20	41.5	53	4	5.4	3.45	1209K	22209K	H209	HE209	SR85X6	2
SN509	40	1-1/2	85	205	60	25	31	60	85	112	170	M12	15	20	41.5	53	4	5.4	3.45	2209K		H309	HE309	SR85X8	1
SN510	45	1-3/4	90	205	60	25	33	60	90	115	170	M12	15	20	46.5	58	4	5.4	3.6	1210K	22210K	H210	HE210	SR90X6.5	2
SN510	45	1-3/4	90	205	60	25	33	60	90	115	170	M12	15	20	46.5	58	4	5.4	3.6	2210K		H310	HE310	SR90X10	1
SN511	50	2	100	255	70	28	33	70	95	130	210	M16	18	23	51.5	67	5	6.9	5.19	1211K	22211K	H211	HE211	SR100X6	2
SN511	50	2	100	255	70	28	33	70	95	130	210	M16	18	23	51.5	67	5	6.9	5.19	2211K		H311	HE311	SR100X8	1
SN512	55	2-1/8	110	255	70	30	38	70	105	135	210	M16	18	23	56.5	72	5	6.9	5.39	1212K	22212K	H212	HE212	SR110X8	2
SN512	55	2-1/8	110	255	70	30	38	70	105	135	210	M16	18	23	56.5	72	5	6.9	5.39	2212K		H312	HE312	SR110X10	1
SN513	60	2-1/4	120	275	80	30	43	80	110	150	230	M16	18	23	62	77	5	6.8	7.1	1213K	22213K	H213	HE213	SR120X10	2
SN513	60	2-1/4	120	275	80	30	43	80	110	150	230	M16	18	23	62	77	5	6.8	7.1	2213K		H313	HE313	SR120X12	1
SN515	65	2-1/2	130	280	80	30	41	80	115	155	230	M16	18	23	67	82	5	6.8	7.4	1215K	22215K	H215	HE215	SR130X8	2
SN515	65	2-1/2	130	280	80	30	41	80	115	155	230	M16	18	23	67	82	5	6.8	7.4	2215K		H315	HE315	SR130X10	1
SN516	70	2-3/4	140	315	90	32	43	95	120	175	260	M20	22	27	72	89	6	8.1	9.5	1216K	22216K	H216	HE216	SR140X8.5	2
SN516	70	2-3/4	140	315	90	32	43	95	120	175	260	M20	22	27	72	89	6	8.1	9.5	2216K		H316	HE316	SR140X10	1
SN517	75	3	150	320	90	32	46	95	125	185	260	M20	22	27	77	94	6	8.1	10.5	1217K	22217K	H217	HE217	SR150X9	2
SN517	75	3	150	320	90	32	46	95	125	185	260	M20	22	27	77	94	6	8.1	10.5	2217K		H317	HE317	SR150X10	1
SN518	80	3-1/4	160	345	100	35	62.4	100	145	195	290	M20	22	27	82	99	6	8.1	13.4	1218K	22218K	H218	HE218	SR160X16.2	2
SN518	80	3-1/4	160	345	100	35	62.4	100	145	195	290	M20	22	27	82	99	6	8.1	13.4	2218K		H318	HE318	SR160X11.2	1
SN518	80	3-1/4	160	345	100	35	62.4	100	145	195	290	M20	22	27	82	99	6	8.1	13.4			H2318	HE2318	SR160X10	1
SN519	85	-	170	345	100	35	53	112	140	210	290	M20	22	27	87	104	6	8.1	15.6	1219K	22219K	H219	HE219	SR170X10.5	2
SN519	85	-	170	345	100	35	53	112	140	210	290	M20	22	27	87	104	6	8.1	15.6	2219K		H319	HE319	SR170X10	1
SN520	90	3-1/2	180	380	110	40	70.3	112	160	218	320	M24	26	32	92	111	7	9.3	19	2220K	22220K	H220	HE320	SR180X12.1	2
SN520	90	3-1/2	180	380	110	40	70.3	112	160	218	320	M24	26	32	92	111	7	9.3	19		23220K	H320	HE2320	SR180X10	1
SN522	100	4	200	410	120	45	80	125	175	240	350	M24	26	32	102	125	8	10.8	21.6	2222K	22222K	H222	HE322	SR200X13.5	2
SN522	100	4	200	410	120	45	80	125	175	240	350	M24	26	32	102	125	8	10.8	21.6		23222K	H3222	HE2322	SR200X10	1
SN524	110	4-1/4	215	410	120	45	86	140	185	270	350	M24	26	32	113	135	8	10.7	29.1		22224K	H3124	HE3124	SR215X14	2
SN524	110	4-1/4	215	410	120	45	86	140	185	270	350	M24	26	32	113	135	8	10.7	29.1		23224K	H2324	HE2324	SR215X10	1
SN526	115	4-1/2	230	445	130	50	90	150	190	290	380	M24	28	36	118	140	8	10.7	32		22226K	H3126	HE3126	SR230X13	2
SN526	115	4-1/2	230	445	130	50	90	150	190	290	380	M24	28	36	118	140	8	10.7	32		23226K	H2326	HE2326	SR230X10	1
SN528	125	5	250	500	150	50	98	150	205	305	420	M30	33	42	128	154	9	12.2	40		22228K	H3128	HE3128	SR250X15	2
SN528	125	5	250	500	150	50	98	150	205	305	420	M30	33	42	128	154	9	12.2	40		23228K	H2328	HE2328	SR250X10	1
SN530	135	5-1/4	270	530	160	60	106	160	220	325	450	M30	33	42	138	164	9	12.2	49.3		22230K	H3130	HE3130	SR270X16.5	2
SN530	135	5-1/4	270	530	160	60	106	160	220	325	450	M30	33	42	138	164	9	12.2	49.3		23230K	H2330	HE2330	SR270X10	1
SN532	140	5-1/2	290	550	160	60	114	170	235	345	470	M30	33	42	143	173	10	13.7	56.5		22232K	H3132	HE3132	SR290X17	2
SN532	140	5-1/2	290	550	160	60	114	170	235	345	470	M30	33	42	143	173	10	13.7	56.5			H2332	HE2332	SR290X10	1

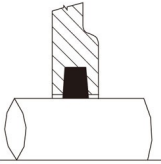


Housing No.	Shaft		Dimensions (mm)										Bolt Dia		Wt Kg	Bearing No	Adapter	Spacer Ring		
	d	H h12	L	J	A	N	N1	H1	H0	A1	j	c	D3 H8	(2)				(4)	SIZE	QTY
SNU505	20	40	165	130	46	13	20	19	71	67		25	52	M10		1.9	1205K	H205	52X5	2
SNU506	25	50	185	150	52	13	22	22	87	72		32	62	M10		2.2	1206K	H206	62X5	2
SNU507	30	50	185	150	52	13	20	22	92	82		34	72	M10		2.6	1207K	H207	72X8.5	2
SNU507	30	50	185	150	52	13	20	22	92	82		34	72	M10		2.6	22207K	H307	72X5.5	2
SNU508	35	60	205	170	60	15	20	25	106	85		39	80	M12		3.2	1208K	H208	80X10.5	2
SNU508	35	60	205	170	60	15	20	25	106	85		39	80	M12		3.2	22208K	H308	80X8	2
SNU509	40	60	205	170	60	15	20	25	109	85		30	85	M12		3.6	1209K	H209	85X5.5	2
SNU509	40	60	205	170	60	15	20	25	109	85		30	85	M12		3.6	22209K	H309	85X7	1
SNU510	45	60	205	170	60	15	20	25	112	90		41	90	M12		3.9	1210K	H210	90X10.5	2
SNU510	45	60	205	170	60	15	20	25	112	90		41	90	M12		3.9	22210K	H310	90X9	2
SNU511	50	70	255	210	70	18	23	28	127	95	35	44	100	M16	M12	5.2	1211K	H211	100X11.5	2
SNU511	50	70	255	210	70	18	23	28	127	95	35	44	100	M16	M12	5.2	22211K	H311	100X9.5	2
SNU512	55	70	255	210	70	18	23	30	133	105	35	48	110	M16	M12	6.7	1212K	H212	110X13	2
SNU512	55	70	255	210	70	18	23	30	133	105	35	48	110	M16	M12	6.7	22212K	H312	110X10	2
SNU513	60	80	275	230	80	18	24	30	148	110	35	51	120	M16	M12	7.9	1213K	H213	120X14	2
SNU513	60	80	275	230	80	18	24	30	148	110	35	51	120	M16	M12	7.9	22213K	H313	120X10	2
SNU515	65	80	280	230	80	18	26	30	154	115	40	56	130	M16	M12	8.6	1215K	H215	130X15.5	2
SNU515	65	80	280	230	80	18	26	30	154	115	40	56	130	M16	M12	8.6	22215K	H315	130X12.5	2
SNU516	70	95	315	260	90	22	29	32	175	120	40	58	140	M20	M12	11	1216K	H216	140X16	2
SNU516	70	95	315	260	90	22	29	32	175	120	40	58	140	M20	M12	11	22216K	H316	140X12.5	2
SNU517	75	95	320	260	90	22	30	32	181	125	50	61	150	M20	M12	12	1217K	H217	150X16.5	2
SNU517	75	95	320	260	90	22	30	32	181	125	50	61	150	M20	M12	12	22217K	H317	150X12.5	2
SNU518	80	100	345	290	100	22	27	35	192	140	50	65	160	M20	M16	15	1218K	H218	160X17.5	2
SNU518	80	100	345	290	100	22	27	35	192	140	50	65	160	M20	M16	15	22218K	H318	160X12.5	2
SNU518	80	100	345	290	100	22	27	35	192	140	50	65	160	M20	M16	15	23218K	H2318	160X12.5	1
SNU519	85	112	345	290	100	22	27	35	209	145	50	68	170	M20	M16	16	1219K	H219	170X18	2
SNU519	85	112	345	290	100	22	27	35	209	145	50	68	170	M20	M16	16	22219K	H319	170X12.5	2
SNU520	90	112	380	320	110	26	32	40	215	160	60	70	180	M24	M16	18	1220K	H220	180X18	2
SNU520	90	112	380	320	110	26	32	40	215	160	60	70	180	M24	M16	18	22220K	H320	180X12	2
SNU520	90	112	380	320	110	26	32	40	215	160	60	70	180	M24	M16	18	23220K	H2320	180X9.7	1
SNU522	100	125	410	350	120	26	32	45	239	175	70	80	200	M24	M16	28	1222K	H222	200X21	2
SNU522	100	125	410	350	120	26	32	45	239	175	70	80	200	M24	M16	28	22222K	H322	200X13.5	2
SNU522	100	125	410	350	120	26	32	45	239	175	70	80	200	M24	M16	28	23222K	H2322	200X10.2	1
SNU524	110	140	410	350	120	26	32	45	271	185	70	86	215	M24	M16	36	22224K	H3124	215X14	2
SNU524	110	140	410	350	120	26	32	45	271	185	70	86	215	M24	M16	36	23224K	H2324	215X10	1
SNU526	115	150	445	380	130	28	35	50	290	190	70	90	230	M24	M20	47	22226K	H3126	230X13	2
SNU526	115	150	445	380	130	28	35	50	290	190	70	90	230	M24	M20	47	23226K	H2326	230X10	1
SNU528	125	150	500	420	150	35	42	50	302	205	80	98	250	M30	M24	49	22228K	H3128	250X15	2
SNU528	125	150	500	420	150	35	42	50	302	205	80	98	250	M30	M24	49	23228K	H2328	250X10	1
SNU530	135	160	530	450	160	35	42	60	323	220	90	106	270	M30	M24	57	22230K	H3130	270X16.5	2
SNU530	135	160	530	450	160	35	42	60	323	220	90	106	270	M30	M24	57	23230K	H2330	270X10	1
SNU532	140	170	550	470	160	35	42	60	344	235	90	114	290	M30	M24	64	22232K	H3132	290X17	2
SNU532	140	170	550	470	160	35	42	60	344	235	90	114	290	M30	M24	64	23232K	H2332	290X10	1

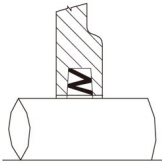


Housing No.	Shaft		Dimensions (mm)														Bolt Dia		Wt Kg	Bearing No	Adapter Sleeve	Locating Ring		
	d	H _{h12}	a	e	b	U	V	C	W	L	d1 _{H12}	d2 _{H12}	n	J	F	g _{H12}	Da _{H8}	(2)				(4)	SIZE	QTY
SNG507-606	30	50	185	150	52	13	20	22	92	82	46.5	54.5		7.5	5	34	72	M10		2.6	1207K	H207	SR72X8.5	2
SNG507-606	30	50	185	150	52	13	20	22	92	82	46.5	54.5		7.5	5	34	72	M10		2.6	22207K	H307	SR72X5.5	2
SNG508-607	35	60	205	170	60	15	20	25	106	85	51.5	59.5		7.5	5	39	80	M12		3.2	1208K	H208	SR80X10.5	2
SNG508-607	35	60	205	170	60	15	20	25	106	85	51.5	59.5		7.5	5	39	80	M12		3.2	22208K	H308	SR80X8	2
SNG509	40	60	205	170	60	15	20	25	109	85	56.9	64.9		8.5	5	30	85	M12		3.6	1209K	H209	SR85X5.5	2
SNG509	40	60	205	170	60	15	20	25	109	85	56.9	64.9		8.5	5	30	85	M12		3.6	22209K	H309	SR85X7	1
SNG510-608	45	60	205	170	60	15	20	25	112	90	62	70.5		8.5	5	41	90	M12		3.9	1210K	H210	SR90X10.5	2
SNG510-608	45	60	205	170	60	15	20	25	112	90	62	70.5		8.5	5	41	90	M12		3.9	22210K	H310	SR90X9	2
SNG511-609	50	70	255	210	70	18	23	28	127	95	67	75.5	35	8.5	5	44	100	M16		5.2	1211K	H211	SR100X11.5	2
SNG511-609	50	70	255	210	70	18	23	28	127	95	67	75.5	35	8.5	5	44	100	M16		5.2	22211K	H311	SR100X9.5	2
SNG512-610	55	70	255	210	70	18	23	30	133	105	72	80.5	35	8.5	5	48	110	M16	M12	6.7	1212K	H212	SR110X13	2
SNG512-610	55	70	255	210	70	18	23	30	133	105	72	80.5	35	8.5	5	48	110	M16	M12	6.7	22212K	H312	SR110X10	2
SNG513-611	60	80	275	230	80	18	24	30	148	110	77	85.5	35	8.5	5	51	120	M16	M12	7.9	1213K	H213	SR120X14	2
SNG513-611	60	80	275	230	80	18	24	30	148	110	77	85.5	35	8.5	5	51	120	M16	M12	7.9	22213K	H313	SR120X10	2
SNG515-612	65	80	280	230	80	18	26	32	154	115	87	95.5	40	8.5	5	56	130	M16	M12	8.6	1215K	H215	SR130X15.5	2
SNG515-612	65	80	280	230	80	18	26	32	154	115	87	95.5	40	8.5	5	56	130	M16	M12	8.6	22215K	H315	SR130X12.5	2
SNG516-613	70	95	315	260	90	22	29	32	175	120	92.5	101	40	10.5	5	58	140	M20	M12	11	1216K	H216	SR140X16	2
SNG516-613	70	95	315	260	90	22	29	32	175	120	92.5	101	40	10.5	5	58	140	M20	M12	11	22216K	H316	SR140X12.5	2
SNG517	75	95	320	260	90	22	30	35	181	125	97.5	106	50	10.5	5	61	150	M20	M12	12	1217K	H217	SR150X16.5	2
SNG517	75	95	320	260	90	22	30	35	181	125	97.5	106	50	10.5	5	61	150	M20	M12	12	22217K	H317	SR150X12.5	2
SNG518-615	80	100	345	290	100	22	27	35	192	140	103	111	50	10.5	5	65	160	M20	M16	15	1218K	H218	SR160X17.5	2
SNG518-615	80	100	345	290	100	22	27	35	192	140	103	111	50	10.5	5	65	160	M20	M16	15	22218K	H318	SR160X12.5	2
SNG518-615	80	100	345	290	100	22	27	35	192	140	103	111	50	10.5	5	65	160	M20	M16	15	23218K	H2318	SR160X12.5	1
SNG519-616	85	112	345	290	100	22	27	40	209	145	131	141	50	11.5	6	68	170	M20	M16	16	1219K	H219	SR170X18	2
SNG519-616	85	112	345	290	100	22	27	40	209	145	131	141	50	11.5	6	68	170	M20	M16	16	22219K	H319	SR170X12.5	2
SNG520-617	90	112	380	320	110	26	32	45	215	160	138	148	60	11.5	6	70	180	M24	M16	18	1220K	H220	SR180X18	2
SNG520-617	90	112	380	320	110	26	32	45	215	160	138	148	60	11.5	6	70	180	M24	M16	18	22220K	H320	SR180X12	2
SNG520-617	90	112	380	320	110	26	32	45	215	160	138	148	60	11.5	6	70	180	M24	M16	18	23220K	H2320	SR180X9.7	1
SNG522-619	100	125	410	350	120	26	32	45	239	175	148	158	70	11.5	6	80	200	M24	M16	28	1222K	H222	SR200X21	2
SNG522-619	100	125	410	350	120	26	32	45	239	175	148	158	70	11.5	6	80	200	M24	M16	28	22222K	H322	SR200X13.5	2
SNG522-619	100	125	410	350	120	26	32	45	239	175	148	158	70	11.5	6	80	200	M24	M16	28	23222K	H2322	SR200X10.2	1
SNG524-620	110	140	410	350	120	26	32	45	271	185	158	168	70	11.5	6	86	215	M24	M16	36	22224K	H3124	SR215X14	2
SNG524-620	110	140	410	350	120	26	32	45	271	185	158	168	70	11.5	6	86	215	M24	M16	36	23224K	H2324	SR215X10	1
SNG526	115	150	445	380	130	28	35	50	290	190	168	178	70	13	6	90	230	M24	M20	47	22226K	H3126	SR230X13	2
SNG526	115	150	445	380	130	28	35	50	290	190	168	178	70	13	6	90	230	M24	M20	47	23226K	H2326	SR230X10	1
SNG528	125	150	500	420	150	35	42	50	302	205	178	188	80	13	6	98	250	M30	M24	49	22228K	H3128	SR250X15	2
SNG528	125	150	500	420	150	35	42	50	302	205	178	188	80	13	6	98	250	M30	M24	49	23228K	H2328	SR250X10	1
SNG530	135	160	530	450	160	35	42	60	323	220	193	203	90	13.5	6	106	270	M30	M24	57	22230K	H3130	SR270X16.5	2
SNG530	135	160	530	450	160	35	42	60	323	220	193	203	90	13.5	6	106	270	M30	M24	57	23230K	H2330	SR270X10	1
SNG532	140	170	550	470	160	35	42	60	344	235	203	213	90	13.5	6	114	290	M30	M24	64	22232K	H3132	SR290X17	2
SNG532	140	170	550	470	160	35	42	60	344	235	203	213	90	13.5	6	114	290	M30	M24	64	23232K	H2332	SR290X10	1

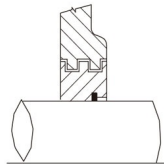
Sealing Options for Plummer Blocks



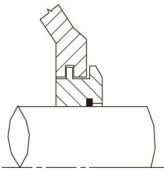
FELT SEALING



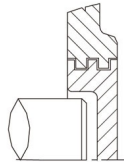
ZF SEALING



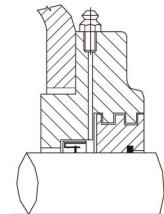
TS SEALING



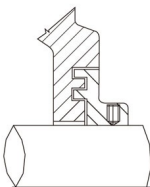
TSU SEALING



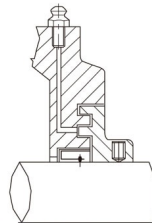
TSA SEALING



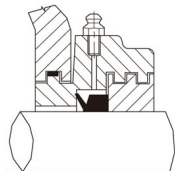
TAC TACONITE SEALING



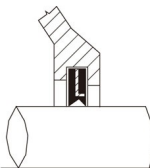
LS SEALING



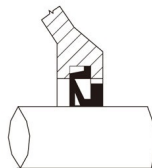
LS TACONITE SEALING



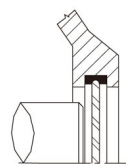
TST TACONITE SEALING



U-LOCK SEALING



TA SEALING



ASNA END PLATE